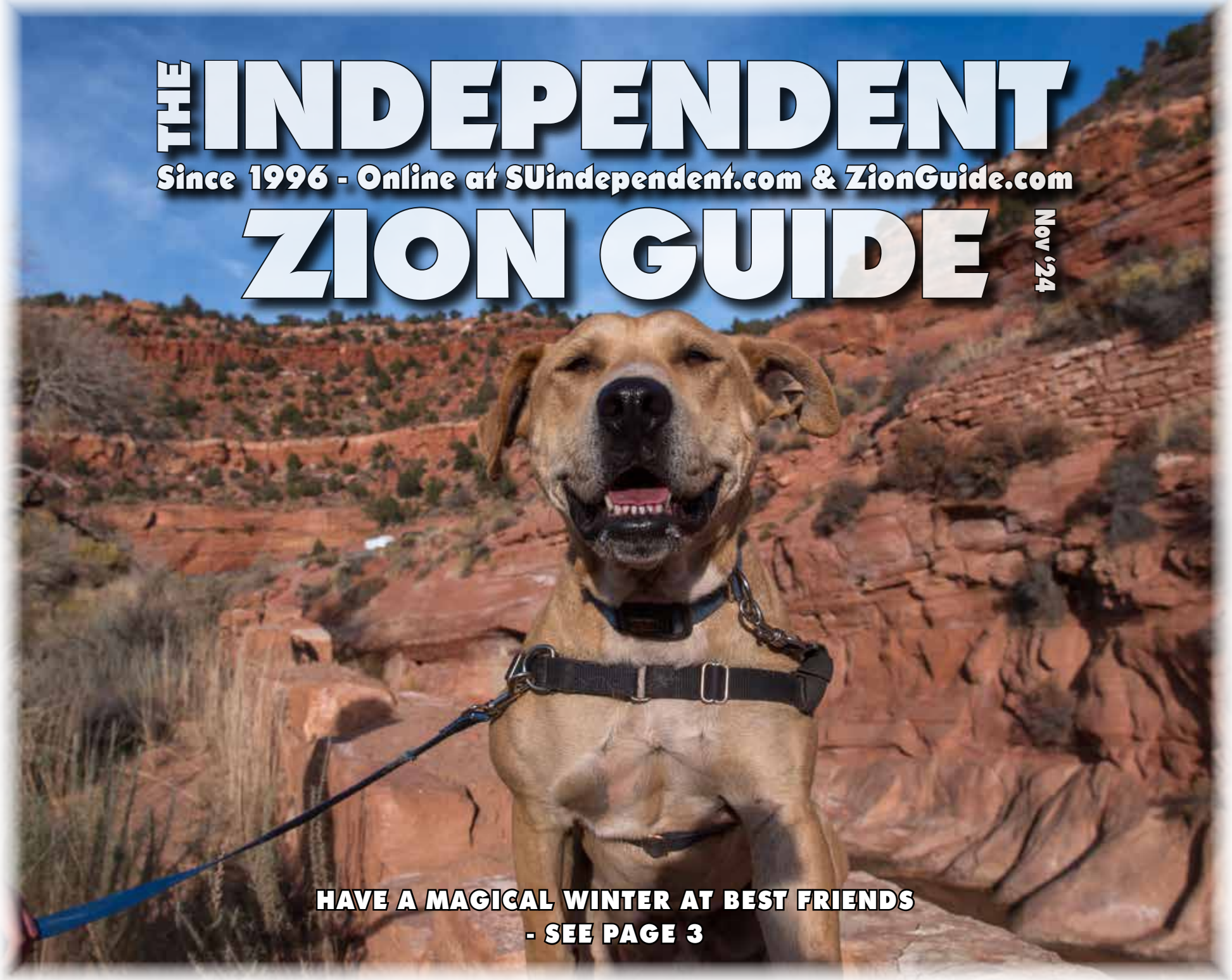


THE INDEPENDENT

Since 1996 - Online at SUIindependent.com & ZionGuide.com

ZION GUIDE

Nov '24



**HAVE A MAGICAL WINTER AT BEST FRIENDS
- SEE PAGE 3**

MORE GREAT HAPPENINGS IN THIS ISSUE:



**EXPLORING THE HUMAN FORM THROUGH ART
- SEE PAGE 4**



**HOLIDAY MAGIC RETURNS
TO HISTORIC DOWNTOWN CEDAR CITY - SEE PAGE 4**



**PLEIN AIR ARTISTS RETURN TO ZION NATIONAL PARK
- SEE PAGE 4**



**UTAH TECH UNIVERSITY THEATRE PRESENTS
PULITZER PRIZE-WINNING, PICNIC - SEE PAGE 4**

THE INDEPENDENT AND ZION GUIDE CONTENTS - NOVEMBER 2024

ON THE COVER:
**Have a Magical Winter
 at Best Friends**
 - See page 3

THE INDEPENDENT SECTION

Events3
 Outdoors9
 Area Calendar of Events 10

ZION GUIDE SECTION

Hiking
 Less-Traveled Zion Hikes..... 18
 Popular Zion Hikes..... 19

Maps
 Springdale Utah Business & Services Map..... 15
 Greater Southern Utah & Zion Area Map.....21
 Kanab Utah Business & Services Map 22

Shopping & Dining

Kanab Featured Shops & Restaurants..... 23

Tips, Info, & Fun
 Safety and Preparedness Tips 13
 General Tips To Enjoy Zion 14
 Top Things To Do In Zion 14
 Zion National Park Shuttle Info 16
 So. Utah State & National Parks 20

Find more great content at ZionGuide.com and SUindependent.com

Publisher: Josh Warburton, ipc@infowest.com • Editor: James McFadden, editor@infowest.com
 Office Manager: Nikki Slade, independent@infowest.com • Advertising Director: Scott Dunford, scott@suindependent.com
 Graphic Designer: Josh Segovia, graphics@infowest.com • Distribution Manager: Tammie Thompson, thomsontammie68@gmail.com

© Copyright 2024 Independent Publishing Company, Inc. • PO Box 3116, St. George, UT 84771 • 435-656-1555 • Online at ZionGuide.com and SUindependent.com

ESCAPE THE EVERYDAY: TEE OFF IN TRAQUILITY

ENJOY A \$99 ROOM AND GOLF PACKAGE

BOOK TODAY

casablancaresort.com/golf
1.877.438.2929



casablancaresort.com/golf • Mesquite, Nevada • One Hour North of Las Vegas



EVENTS

HAVE A MAGICAL WINTER AT BEST FRIENDS

Southern Utah is gorgeous any time of year, but there's something extra special about visiting in the fall and winter. With fewer tourists and unobstructed views of the majestic red rocks, you'll have more time and space to explore all the fantastic attractions in the area.



At the top of the list is the award-winning Best Friends Animal Sanctuary, the nation's largest no-kill animal sanctuary, just outside Kanab, Utah. Awarded Best Attraction from Best of State Utah in 2024, Best Friends cares for about 1,600 animals on any given day and offers free visitor and volunteer experiences at every level. You can spend time brushing horses, petting pigs, walking dogs, socializing with cats and bunnies, and much more!

What began as a dream by its co-founders in 1984 to save homeless pets, Best Friends' Sanctuary has grown from endless acres of rustic land formerly used as dinosaur stomping grounds and a backdrop for



Western movies into a national organization that's working to end of the killing of dogs and cats in America's shelters.

It's the dogs, cats, horses, bunnies, pigs, goats, and more that attract visitors for the first time. But it's the sense of community, the beautiful ambiance, and the peaceful energy of the Sanctuary that has people coming back from all over the world to explore all the Sanctuary has to offer. From stunning hiking trails on the 3,000-acre property to the \$5 all-you-can-eat daily vegan lunch with a million-dollar view of the canyons, there is so much for animal



lovers of all ages to enjoy.

Of course, if you're looking for a new four-legged friend, the Sanctuary is the perfect place to find your new pet! There are three adoption locations on site: Roxy's



Room at the Welcome Center, Sinjin's in Cat World, and the Adoption Hub on Rhonda Road in Dogtown. Stop by the Welcome Center to get a map of the Sanctuary, find out about available tours and volunteer options in real-time, and enjoy a hot cup of coffee or tea.

Lodging can be found on-site in one

of the Sanctuary's several cabins and cottages that offer views of horse pastures and starry skies or at the organization's hotel, the Best Friends Roadhouse & Mercantile, in downtown Kanab, winner of the 2022 and 2023 Best Motel Award and the 2023 Best of the Best Hospitality Trophy from Best of State Utah.

Designed as the most pet-centric hotel in the country, the Roadhouse extends the Sanctuary experience by offering guests sleepovers of Sanctuary dogs or cats. — Bringing your own pet? No problem! You can have up to four pets in your room at no additional charge. What's more, every Roadhouse stay benefits the lifesaving work of Best Friends Animal Society.

The Roadhouse is just five miles away from the Sanctuary, within walking distance of delicious dining destinations like Peekaboo Woodfire Kitchen, which offers a tantalizing array of vegan and vegetarian dishes, including delectable thin-crust pizzas, tasty brunch options, and desserts to die for.

The Sanctuary is also a fabulous staging area to visit Utah's world-famous national parks just 90 minutes away: Zion, Bryce Canyon, and the Grand Canyon North Rim.

However long you plan to visit Kanab — a few hours, days, or even weeks — you won't want to miss the magic of Best Friends. Visit bestfriends.org or call (435) 688-2327 to learn more about the Sanctuary. To book a stay at the Roadhouse, visit BestFriendsRoadhouse.org or call (435) 644-3400.



WILD TURKEY EXHIBIT EDUCATES WILDLIFE ENTHUSIASTS

November 8-10, & 15-17, 2024 at the Hardware Wildlife Education Center.

You can learn about wild turkeys in Utah — and maybe even see some yourself — by visiting the Hardware Wildlife

Education Center in November.

The Utah Division of Wildlife Resources' Hardware Wildlife Education Center is located at the Hardware Wildlife Management Area in beautiful Blacksmith Fork Canyon in Cache County. The education center is typically open seasonally, primarily during the winter months, while the sleigh rides and elk viewing are taking place.

However, similar to last year, the center will also be open in November for a Turkey Tales exhibit. The free exhibit will be open from 10 AM to 3 PM during the two exhibit weekends.

"We can't guarantee you'll see wild turkeys during your visit, but there's a decent



chance you will," Utah Division of Wildlife Resources Hardware Wildlife Education Center Director Marni Lee said. "Dozens and dozens of wild turkeys live in the wildlife management area, and fall and winter are some of the best times to see them."

Once you arrive at the center, there will be a lot of activities available in addition to the exhibit. Family-friendly activities offered include a free craft project and hourly story times. A walking path near the center will become an educational walk with enlarged book pages offering fun animal activities.

"Many Utahns aren't aware that wild turkeys live in the state," Lee said. "The exhibit provides fun facts about the birds and lots of information about wild turkey

biology."

You can reach the Hardware Wildlife Education Center by traveling 15 miles out of Hyrum on state Route 101. With the fall colors on full display, the drive up Blacksmith Fork Canyon should be gorgeous. On your drive up the canyon, visitors should also keep their eyes peeled for turkeys — you might see some before you arrive at the WMA.

Fall fishing is also available in the Blacksmith Fork River that flows down the canyon.

Visit WildLife.utah.gov/hardware.html for more information about the exhibit or activities at the center during November, or call the Hardware Wildlife Education Center at 435-753-6206.

Southern Utah's Longest Running Improv Comedy!

Every Friday* @ 8pm
913 S. Main St.
Cedar City
By IFA & Dollar Tree

Admission \$10

off the cuff comedy improvisation
 @otccomedy

Visit otccomedy.com for more info

OTC COMEDY
 o f f t h e c u f f

*closed on the Fridays after Thanksgiving and Christmas

EXCLUSIVE Clip-n-SAVE COUPON

The Milne Jewelry Co. The name you've trusted since 1951.
 43 E. St. George Blvd • 673-2552

MOST WATCH BATTERIES ONLY \$6

Includes installation. Top quality batteries used. Lithium and special batteries \$7-\$8.

EVENTS

HOLIDAY MAGIC RETURNS TO HISTORIC DOWNTOWN CEDAR CITY

The magic of the holiday season begins in Historic Downtown Cedar City on Saturday, November 30th, 2024, with Cedar City Events' Annual Holiday Lighting Ceremony and the opening night of the Holiday Tree Jubilee fundraiser.

With plenty to experience for all ages, this year's festivities will begin at 10 AM with our second annual Christmas Market, held in The Venue (formerly the Cedar City Movie Theatre) and will be open until 9 PM, roads will close to set up for the event at noon.

Starting at 3 PM the outdoor activities will begin, live performances will begin in front of the City Offices at 5 PM, and Santa's arrival, lighting of the holiday lights, and fireworks will begin shortly after. There will be a large LED screen showing the live



stage performances to make it more visible for all attendees! After the live stage show, there will be a live nativity performance by the Cedar Area Inter-faith Alliance in front of The Old Rock Church on Center Street.

As part of the production, one lucky child and their guardian will have the opportunity to arrive in style alongside the Big Man himself and SUU Aviation as part of the 2nd Annual Fly with Santa contest. Follow Cedar City Events and the Holiday Tree Jubilee on Facebook, Instagram, or the website for contest details.

The Holiday Tree Jubilee is a multi-day fundraising event that contributes thousands of dollars to local charities every year. This year, the community is also encouraged to bring non-perishable food items to the Downtown Lighting in support of the Iron County Care and Share food bank. 1,000 Community members will be able to exchange one of these items for our special light up magic wand, provided by the State Bank of Southern Utah and Cedar City Events.

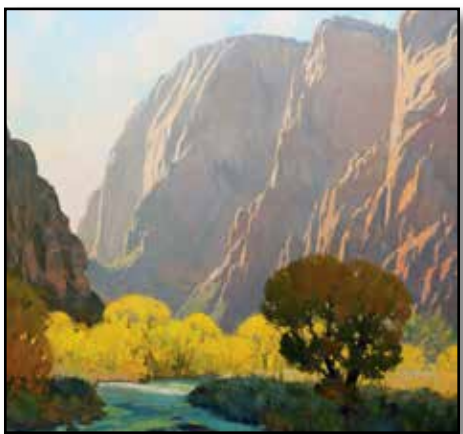
Jump into the holiday season with a spectacular downtown tradition sure to create lasting memories for you and your loved ones! Festivities begin as early as 10 AM and will continue through the evening until 9 PM.

Visit CedarCity.org/downtownlighting for more information about the schedule of events and the Fly with Santa contest. Follow Cedar City Events and the Holiday Tree Jubilee on Facebook and Instagram to stay connected this holiday season. You won't want to miss this unforgettable event!



PLEIN AIR ARTISTS RETURN TO ZION NATIONAL PARK

The Zion National Park Forever Project, in partnership with Zion National Park and Worthington Gallery, is excited to present the 2024 Zion National Park Plein Air Art Event from November 4-9, 2024. This highly anticipated, week-long celebration is open to the public, offering a unique opportunity to experience art inspired by Zion's awe-inspiring landscapes.



Throughout the week, attendees can enjoy daily plein air painting demonstrations at Worthington Gallery, where a group of renowned artists will bring Zion's beauty to life on canvas. These free art demonstrations provide an intimate look into the creative process of plein air painting—capturing the natural light and stunning scenery in real-time. Visitors can interact with the artists, watch as they



work, and gain insight into how Zion's majestic cliffs, canyons, and rivers inspire their masterpieces.

The event will reach its peak with two major gatherings. In addition to the demonstrations, the event includes a Gala and opportunities to engage with the artists during special programs, where they will share their inspiration, techniques, and stories about painting in Zion. The event is part of a broader mission to highlight the intersection of art, nature, and conservation, with proceeds from the sale of artworks benefiting Zion National Park Forever Project's ongoing efforts to preserve and protect the park.

The Zion Plein Air Art Invitational celebrates the history of art in Zion National Park while directly supporting the artists and the Zion National Park Forever Project's mission of conservation and education. Your participation is crucial in furthering these important initiatives.

Visit zionpark.org/art2024 for more information on the artists and how to get a preview of the featured pieces.

EXPLORING THE HUMAN FORM THROUGH ART

An Exhibition at the Sears Art Museum, November 22 – January 10, 2025.

The Sears Art Museum's upcoming exhibition, *About Face / How Do You Figure?*, invites visitors to explore the human form and face, among the oldest and most captivating subjects in art. Opening on November 22, 2024, and running through January 10, 2025, the exhibition examines how representations of the human face and body reflect societal ideals, emotional resonance, and cultural identity.

The opening reception on November 22 will include light refreshments and live entertainment by Kenny's Caricatures, offering guests a chance to take home a personalized caricature and enjoy a lively, interactive start to the exhibition.

From ancient cave paintings to refined royal portraits, the human form has long been a source of fascination, offering audiences a mirror to our shared humanity. *About Face / How Do You Figure?* gives visitors an opportunity to reflect on how artists from different eras have represented the human form. Audiences are encouraged to explore these rich portrayals, engage with timeless questions of identity, and consider the evolving meanings

embodied in the human form.

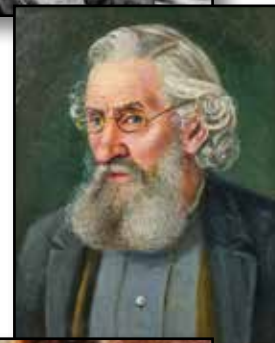
James Peck, Director and Curator of the Sears Art Museum, underscores the exhibition's importance: "The human form and face are fundamental to how we understand ourselves. Throughout history, artists have used the form and the face as symbols of beauty, power, and identity."

Featured regional artists, including McGarren Flack, Dilleen Marsh, Dennis Martinez, Del Parson, Megan Schaagaard, Julie Rogers, and Peg Wheeler, contribute distinctive perspectives to the exhibition, ranging from realism to conceptual abstraction. Additionally, pieces from the Sears Art Museum's permanent collection by noted artists like Jerry Anderson, J. Roman Andrus, Laura Gilpin, Dorothea Lange, Michael Malm, Fritz Scholder, and L'Dean Trueblood complement the exhibition's exploration of the human form.

The Eccles Grand Foyer will feature works by Semion Percin (1905-1998), a celebrated

Russian-born American portrait artist and caricaturist, known for his humor-infused caricatures and precise portraiture. Based in Southern California, he captured the likenesses of over 100,000 people, from Hollywood stars to beachgoers, in a career spanning more than 60 years.

Visit SearsArt.com for more information.



UTAH TECH UNIVERSITY THEATRE PRESENTS PULITZER PRIZE-WINNING, PICNIC

November 14-23, 2024.

The Utah Tech University Theatre Program proudly presents *Picnic* by William Inge, a Pulitzer Prize-winning drama that explores love, desire, identity, and societal expectations. Performances are November 14 – 16 and 19 – 23. All performances are at 7:30 PM in the Eccles Blackbox Theatre on the Utah Tech campus.

Picnic offers a captivating look at how lives are transformed in just 24 hours by the arrival of a mysterious young drifter.

On a hot Labor Day morning, the women of a modest neighborhood prepare for the annual picnic. Flo Owens dreams that her daughter Madge will receive a proposal from Alan, the son of a wealthy family. Meanwhile, Millie, the younger daughter, longs to escape small-town life.

This seemingly tranquil environment is upended when Hal Carter, a charming and rugged drifter jumps off a freight train and into their lives. In the span of one day, passions awaken, hearts are broken, and the quiet community is forever changed. *Picnic* delves into themes of love, sexuality, repression, and the quest for personal freedom, inviting audiences to reflect on the choices that shape their lives.

The cast features a talented ensemble of students, each bringing depth and authenticity to the play's complex characters. Ashlie Chaston portrays Helen

Potts, Ian Kranendonk steps into the role of Hal Carter, and Ari DeGraaff is Millie Owens. Tyson Ruiz takes on the role of Bomber Gutzel, Kami Foster as Madge Owens, with Jaycie Montañó portraying Flo Owens, Bree Stobbetakes is Rosemary Sydney, Wyatt Brown plays Alan Seymour, and Kai DeMedicis tackles Howard Bevans. Rounding out the cast, Emilia Kerbow and Erin Wortham play Irma Kronkite and Christine Schoenwalder ensuring an unforgettable theatrical experience.



This production combines the talents of Utah Tech students and professors. Student technical staff includes Addy Enslin (Stage Manager), Saydee Burbidge (Assistant Stage Manager), Sophie Price (Assistant Director), and designers like Charlie Cash (Costumes), Austin Burns (Lighting), Katie Olsen (Props), and Allie Snook (Assistant Sound). Faculty contributions come from Chelsea Richards (Scenic Design), Kris Davies (Costume Construction), Henry Echeverria (Technical Direction & Sound), Brandon Bruce (Intimacy Director), and Jennifer Weber (Dance Choreography). Dramaturg Allison Gibbs adds insight, making this collaboration a well-rounded and professional production.

Admission to the performances is free, and no advance ticket reservations are required. The Utah Tech Theatre Program welcomes everyone to enjoy this engaging production, which not only entertains but also contributes to the growth and development of the university's talented students.

For additional information or inquiries, please contact Chelsea Richards at chelsea.richards@utahtech.edu or call 435-879-4385.

Don't miss this opportunity to experience a timeless drama about love, longing, and the complexities of human nature.

Beaver Dam Station & Bar
INVITES YOU TO COME PLAY

The Pick
ARIZONA LOTTERY

ARIZONA POWERBALL WIN MILLIONS!

Come enjoy Live entertainment at the bar!

NEW! - Red Wagon Eats - Serving breakfast & burgers! 8am - 8pm

928-347-5589 • 928-347-5492 - Hwy 91, Littlefield AZ

M & S Turquoise
Wholesale to the public

(435) 628-2514

53 East St. George Blvd.
St. George, Utah 84770

FAX (435) 673-2556

E-mail: msturq@msn.com

EVENTS

FRONTIER HOMESTEAD STATE PARK MUSEUM UPCOMING EVENTS

Frontier Homestead State Park, where history becomes your story, in partnership with the Cedar City Corporation, celebrates the founding of Cedar City with 2 days of hands-on activities designed to honor the spirit of our community and those who created opportunities for growth. Enjoy the cool, crisp fall air on Friday November 8th and Saturday November 9th as Frontier Homestead hosts its annual Iron Mission Days. The cost is \$4 per person or \$20 for families of up to 8.



Friday, November 8th, guests can enjoy self-guided pioneer activities beginning at 10 AM. Activities will include pioneer games, hand-cart pulling, and may-pole. The local HAM radio club will be broadcasting from our museum through the day. Then join us for a free family game



night Friday evening from 6 to 8 PM sponsored by Cedar City Corporation.

Saturday, November 9th, in addition to the self-guided activities and the HAM radio club, we'll have a number of living history demonstrations including our ever-popular blacksmith working in the forge. Shop for gifts for others or yourself at our artisan vendor market.

Activities will run from 10 AM to 4 PM on Saturday.

Even though snow hasn't yet begun to fall, winter is not far off. Mark your calendars now for Holidays at the Homestead scheduled for December 4th through 6th and 9th from 5:30 pm to 8 pm each evening. Festivities will include crafts, entertainment, and possibly a visit from a Christmas VIP. Regular day use admission fees apply during the Holidays at the Homestead event.

Our Homestead events are sure to spark your imagination and provide adventure for the whole family, so come join us for the fun. For more information call us at 435-586-9290, visit Facebook @friendsoftheFrontierHomestead, or our website, stateparks.utah.gov/frontier-homestead. Frontier Homestead is located at 635 North Main in Cedar City.

OTC COMEDY: A NEW EXPERIENCE EVERY WEEK

We've all been there: it's Friday, you're bored, and you've been scrolling through the streaming options for an hour, paralyzed by the over-saturated choices available. Wouldn't it be swell if there was a place to experience entertainment that is guaranteed to be fresh and unique without having to settle for another hastily made straight-to-Netflix film starring three Canadian actors you've never heard of? I mean, I'm not knocking Canadian actors, but it's FRIDAY! It's time for something new!



That's what OTC Comedy, Southern Utah's longest running improv comedy theater, is all about. Trained by improv legends across the country, OTC strives to bring Cedar City the highest-quality entertainment this side of the Zion Curtain. With decades of improv experience behind each cast member, you can be sure that each performance will be wild, unpredictable, and hilarious!

OTC has been performing every week since January of 2004, and they aren't letting 20 years of shows slow them down a bit. The OTC Comedy Theater (located at 913 South Main Street in Cedar City) is bouncing every Friday night at 8 PM when the show begins – arriving around 7:45 will

help get the best seats.

The show combines elements of both short form improv (games like on Whose Line is it Anyway?) and longform improv (a more theatrical scene-based style) to create a truly unique package that will never be seen again once the lights go out and the audience leaves. Every show is a once-in-a-lifetime opportunity to see a flash of humor and heart.

"Such an amazing group of people. This is a great place to go for a good laugh. They have been doing this for years and have made such a positive impact in our Cedar community." – Cade Bentley, Google Review

OTC Comedy can be seen every Friday at 913 South Main Street in Cedar City. House opens at 7:30 PM and the shows begin at 8 PM. Tickets are \$10 and can be purchased either day-of at the venue or in advance at OTCComedy.com. Content typically ranges from PG to PG-13.



THE NUTCRACKER COMES ALIVE IN KANAB

The Symphony of the Canyons would like to invite one and all to join them and Bring the Magic Back this Christmas season.

The symphony will be playing live for Nutcracker, November 22nd and 23rd, 7 PM UT, at the Kanab High School auditorium, Robert Lacey conducting. Tickets are \$15 for adults and \$10 for children. Please come support the symphony and the Red Rock Dancers and Precious Gems dance studios and enjoy the classic holiday favorite as only this incredible talent can.

Then, on December 7th, come hang out at the Kanab Center Gymnasium from 10 AM to 4 PM for the Symphony of the Canyons Christmas Festival. You can browse the many wonderful vendors for early, last minute, on ongoing

Christmas shopping while you enjoy music and dancing from the stage throughout the day.



Finally, also on December 7th, from 7 PM to 9 PM, conclude the day with a beautiful evening of fine dining, catered by Sego Restaurant, and enchanting Christmas music by members of the orchestra, all nestled within the magical decorations of the Kanab Center Ballroom and magnificent skill of the Kanab Center staff. Tickets are \$50.

We all need a little magic in our lives, the magic of Christmas especially. This year, celebrate the holidays with the Symphony of the Canyons and help us all bring a little more of the magic of Christmas into our homes and communities and hearts.

Visit SymphonyOfTheCanyons.org/events for more information and updates.

PRESENTED BY SUU SOUTHERN UTAH UNIVERSITY

GENTRI CHRISTMAS

AMERICA FIRST EVENT CENTER
DECEMBER 12, 2024
 CEDAR CITY, UTAH

TBIRDTICKETS.COM

THE PAC PRESENTS

Steel Magnolias

BY ROBERT HARLING

A JAN PRODUCTION

NOVEMBER 6, 7, 8
 11 & 12
 7:30 - TICKETS \$30
 PERFORMANCES HELD AT 905 S MAIN STREET
 ST. GEORGE

EVENTS

SOUTHERN UTAH ART GUILD'S NOVEMBER EVENTS

The Southern Utah Art Guild would like to invite you to three art events in November at Red Cliff and Arrowhead Gallery.

Art Walk: Save the Date, Friday, November 1, for Art Walk from 5 to 8 PM in the St. George downtown district. Enjoy art galleries, art exhibits, music and fine dining. Arrowhead Gallery, Red Cliff Gallery and the Tilted Kiln as well as many other galleries, restaurants and retail shops will be open.



Red Cliff Gallery: Enjoy the unique art of 50 local artists with over 95 new works of art at our "Bountiful Harvest" art show on display at the Red Cliff Gallery, 220 N 200 E, St. George, Utah. The show continues thru November 14. Starting November 22 and running thru December 19 is the "Gift of Art" show. This is our holiday gift giving show with inexpensive and smaller works of art perfect for gift giving. Gallery hours are M-F 9 AM to 5 PM and Saturday Noon to 4 PM.

Arrowhead Gallery: Arrowhead Gallery's featured artist for November is Cheryl Huner. Designing and creating jew-

elry has always been an important part of Cheryl's life. Wire wrapping and wire weaving is one of her favorite ways to showcase her unique and distinctive jewelry designs.



Arrowhead Gallery is open Tuesday through Thursday 11 AM to 6 PM and Friday and Saturday 11 AM to 8 PM, 68 E. Tabernacle

in St. George.

Come support the arts in your community. A piece of artwork is a great way to add beauty to your home or office.

The Southern Utah Art Guild offers many opportunities to the artist such as free art classes and workshops, free vendor events, opportunities to participate in many of the Red Cliff Gallery art shows, and opportunity to be a permanent artist in the Arrowhead Gallery.

Visit SouthernUtahArtguild.com for more information.



BEST[®] of LAS VEGAS
 GOLD WINNER
 LAS VEGAS REVIEW-JOURNAL 2023
 BESTOFLASVEGAS.COM

THANKS FOR VOTING US BEST FINE DINING



ALL OUR BEEF IS USDA DRY AGED PRIME GRADE FROM CHICAGO STOCK YARDS



Katherine's
 Prime Steaks • Seafood • Italian



CasaBlancaResort.com | Reservations Recommended 702.346.6846



EVENTS

TWO HOLIDAY EVENTS AT THE SPOTTED DOG

The Spotted Dog is thrilled to announce two exciting events this November, blending holiday festivity, delightful dining, and a touch of wonder.

Beaujolais Nouveau Celebration: "Down the Rabbit Hole" – Thursday, November 23rd at 6 PM.



Step into a whimsical world as The Spotted Dog presents this year's Beaujolais Nouveau celebration, themed "Down the Rabbit Hole!" Beginning at 6 PM, the evening will feature a multi-course dining experience, with each course carefully paired with wines from our extensive selection. Guests are encouraged to dress in classy, themed attire inspired by the charm and mystery of Alice in Wonderland.



In addition to tasting this year's vibrant Beaujolais Nouveau wine, guests can explore a curated selection of local wines, offering a unique blend of international and regional flavors. Enjoy French-inspired appetizers and a magical atmosphere that promises to take you on an unforgettable journey through taste and time.

Thanksgiving Dinner: Thursday, November 28th, Noon to 8 PM

Less than a week later, The Spotted Dog invites you to its annual Thanksgiving dinner from 12 to 8 PM. Our holiday menu will feature all your favorites, including roasted turkey, potatoes, stuffing, seasonal vegetables, and cranberry sauce, with some creative culinary twists. Whether you're celebrating with family or friends, we provide a cozy, stress-free dining experience. Be sure to make your reservations early, as this event is always popular!

Celebrate the season with us at The Spotted Dog. Whether you're enjoying a wine-pairing adventure "Down the Rabbit Hole" or savoring a traditional Thanksgiving flavor, we look forward to making your holiday special.

For reservations and more information, please visit Flanigans.com/dine or call us at 435-772-3244.

A HOLLY JOLLY IMPROV SHOW AT THE ELECTRIC THEATER

A Chef, a Wizard, and Paul Bunion, walk onto... a food truck? Just a taste of what patrons experienced at an evening filled with laughter at So U Comedy's Halloween-themed improv show this past month. Cast members, along with the audience, donned costumes for the annual tradition of some "spooktacular" comedy.

The So U Comedy Theater features themed improv shows throughout the year. Evenings celebrating The 80s, Pi Day, and the widely popular "May the 4th Be With You" Star Wars Tribute are all part of the fun that So U showcases. In keeping with tradition, their Holly Jolly Improv Show is returning on December 21st at the Electric Theater.

All the scenes from So U are based on suggestions from (YOU) the audience. Every show is unique in the fact that it is made up on the spot. This never-before and never-to-be-seen-again form of entertainment is exciting, not just for the Players, but especially for the audience.

Greg Belnap, the managing director of So U, notes that throughout his journey with the organization, people have been his favorite part. "I love improv because I love the bonds of friendship I have made with other performers and our audience. Improv brings a wide array of people together, both as performers and patrons. As an interactive art form, all involved get immediate ownership of what they create at any given show." As an audience favorite and a regular host of the show, Belnap has had his share of memorable moments. He firmly believes that every show is a unique experience that an audience member can't get anywhere else. What better way to share the joy this holiday season than sharing in

laughter with friends and family?

For the perfect family outing or a quick break from the festivities, So U will deliver the laughs. Plan ahead and get our Punch Pass Card, ideal for stocking stuffers - 10 Shows at a discounted price! The annual Holly Jolly Improv Show is on December 21st, with a family-friendly show at 7 PM



(Nice) followed by the uncensored show at 9 PM (Naughty). As always, BOTH performances feature SANTA as the guest host. Bring the whole family for fun and photos! So U is also available for private shows, including corporate events, birthdays, and Christmas parties.

Visit SoUComedy.com for a list of upcoming shows and ticket prices. Discounts for Veterans, Seniors, Children, and Students are available online and at the door.

THE PAC PRESENTS STEEL MAGNOLIAS

"Laughter through tears is my favorite emotion." – AtThePAC.org

"(This) production of Steel Magnolias by Robert Harling was in the upper echelon of any show I've ever seen. You'll be hard-pressed to find a better show for your time and money. I laughed, I cried, and I have thought about the show regularly since." Scott Savage of Utah Theater Bloggers.

If you are looking for an entertaining and deeply moving piece of theater, look no further than the newly renovated Performing Arts Campus on South Main Street in St. George. The unbreakable bonds of friendship are again on display in the return of Steel Magnolias, a JanB Production, in the venue's first official stage play.

Reprising their roles from a successful summer run at The American Crossroads

Theater, (formerly SimonFest) this cast of six women have polished their performance and eagerly bring this beautiful story to life. Written by Robert Harling, Steel Magnolias is a heartfelt tribute to his sister Susan, who passed away due to complications related to diabetes.

The story centers around a group of



friends in north Louisiana preparing for the wedding of Shelby, daughter of long-time beauty shop patron M'Lynn. The experiences of marriage, motherhood, and mortality directly parallel the life of Harling's sister in beautiful admiration. The cast of characters includes Ouiser and Miss Clairee, long-time best friends, and spunky shop owner Truvy. Adding a layer of mystery and sincerity, Annelle, the newest member of the bunch, rounds out an iconic sampling of true sisterhood. Steel Magnolias explores the complexities of life through a dialogue ranging from quick wit to profound sorrow, all smothered in a bit of honey.

Jan Broberg, producer and actress portraying M'Lynn has the recent and real-life experience of donating a kidney to her sister earlier this year. On returning to the stage

post-surgery, Broberg said, "I have a deep and abiding gratitude for the relationship of sisters, mothers, daughters, and friends. The lengths we will go to protect, defend, and care for each other in all our imperfections is the point - to live beyond our comfort zones." Like the women in Steel Magnolias, the ultimate hope for anyone in attendance is to move on through life's challenges of victory and defeat "hopefully while holding someone's caring supportive hand."

Visit AtThePAC.org for tickets and more information. Steel Magnolias is scheduled for November 6, 7, 8, 11, and 12 at 7:30 PM. Tickets are \$30 and will be available at the door.

All performances will be held at the Performing Arts Campus, 905 S Main in St. George.



Come Visit Panguitch this holiday season



2023 Holiday Events In Panguitch

Panguitch Holiday Craft Fair..... Nov. 8 & 9

Christmas Tree Festival Nov. 15 & 16

Christmas Car Show Dec. 13 & 14

Light Parade Dec. 13

See Panguitch.com for times and locations



November 2024 EVENTS AT ADRIA'S

- KARAOKE W/JIMMY T - AFTER HALLOWEEN PARTY, FRIDAY 11/1
- KARAOKE WITH JIMMY T, FRIDAY 11/08
- KARAOKE WITH JIMMY T, FRIDAY 11/15
- CHRIS PAUL BAND, SATURDAY 11/16, 8PM
- KARAOKE WITH JIMMY T, FRIDAY 11/22
- KARAOKE WITH JIMMY T, FRIDAY 11/29



Cocktails, Beer, Wine Special Bar Menu

Full liquor license
Ice Cream • Coffee
Closed Wednesdays
Check google for hours

86 S 200 W, Kanab • (435) 644-7800

www.AdriasRestaurant.com

EVENTS

Z-ARTS PRESENTS THE ZION CANYON ARTS & CRAFTS FAIR

Join Z-ARTS for the Zion Canyon Arts & Crafts Fair at the Canyon Community Center in Springdale, Utah on November 29 & 30, 2024. From 10 AM to 4 PM each day, an outstanding group of local, talented artisans will be showcasing their arts & crafts for purchase, in a range of price points, just in time for the holidays!

You'll find beautiful handmade jewelry, fine art, metalwork, blown glass, sculpture, crocheted items, pottery, leatherwork, seasonal Christmas wreaths, and ornaments. The biggest challenge will be deciding which items you'll give as gifts and which ones you'll decide to keep for yourself!

This community event is free for residents and visitors alike to enter. Two local food trucks will be set up all day serving lunch, and you certainly won't want to miss the decadent community bake sale for coffee, a variety of sweet treats, as well as take-home cakes, pies, and more.

New for 2024, we're featuring a silent auction fundraiser for Z-ARTS. Local artists and area businesses have generously

donated a variety of fabulous silent auction items including art, spa treatments, e-bike rentals, restaurant gift certificates and more. Over the two day fair, attendees will



be able to bid on an amazing selection of items and experiences, perfect for residents and visitors to personally enjoy, or an ideal holiday gift for loved ones.

Also new in 2024, the Springdale Elementary School will have a table of handmade ornaments for purchase. This is a fundraiser for future art projects at the elementary school, so it's a great opportunity to support young local artists in the community.

If you'd like to volunteer your time at the event, to help to set up or break down, staff the bake sale table, provide items for the bake sale or silent auction, please reach out to and we'll get you involved.

We encourage everyone to participate in this community-wide event; artisans, volunteers, bakers, shoppers, local businesses, visitors...come to the Zion Canyon Arts & Crafts Fair, where everyone is welcome... the more the merrier!

Visit ZArts.org for more information.

WINE COUNTRY AT ZION VINEYARDS IS JUST A SHORT DRIVE AWAY

Here at Zion Vineyards, we have been making wines for more than 10 years, and the Tasting Room has been Open for Business since May of 2023. We have had guests from across the United States, Canada, France, Great Britain, Germany, Italy and Australia. Guests from around the World come to our Tasting Room and try our wines, and the response has been fantastic. Many have purchased our wines to take home and share the experience and flavors with their friends and family. This demonstrates that Utah can produce some fantastic wines.

Harvest is finished. Now is the time for our winemaker, Robert Cec, to process the wine. Since harvest and after the crush he has been carefully monitoring the must, (that's juice the skins and the seeds) which impart colors in wine, optimizes flavor, and tannic structure. This may include flavors of strawberry, blackberry, blueberry, raspberry, and cherry. Laying on its skins and seeds also provide the tannins in wine. Tannin in wine adds both bitterness, astringency, and

complexity. It is most found in red wine, although some white wines have tannin too.

The longer a wine lays in contact with the skins and seeds the deeper and darker the color, and more complex berry flavors. This is because the skins contain polyphenols, which create color and tannins in wine. Skin contact increases the wine's flavor, it also increases the wine's viscosity, or "body", this refers to its mouthfeel. Viscosity describes the thickness or texture of a liquid, for example water is less viscous than syrup. Many of our wines are fruit forward, and full bodied with complex characters and velvety tannins. These tannins cut through the intense meaty protein of a well-marbled steak, permitting subtler flavors of both wine and food to emerge.

The Owner and Vintner, Michael Jacksons considers this his Legacy. He has had a Love of Wine most of his life, and Zion Vineyards is a dream fulfilled. Our Winemaker Robert Cec is self-taught, and he has created some amazing and Award-Winning wines for you to enjoy. Reds with depth of character and bold style, and Whites with medium to high acidity and well-balanced fruit and citrus notes.

Come and visit us at 5 Hidden Valley Rd in Leeds, Utah just off the I-15, 12 miles North of St George. Input Zion Vineyards in Google Maps and it will bring you right to us. We are a small Boutique Winery in the Washington County AVA.

Visit us at ZionVines.com for more information, and plan your visit today!



GENTRI TO ILLUMINATE SUU WITH ENCHANTING CHRISTMAS CONCERT

The GENTRI Christmas Concert, featuring the dynamic Gentlemen Trio, is set to take place on December 12th at 7:30 PM at the America First Event Center on the campus of Southern Utah University. Presented by the SUU Office of Executive Events, this festive evening promises to be a highlight of the holiday season.

GENTRI, short for "The Gentlemen Trio," is renowned for their powerful harmonies and captivating performances. Since their inception in June 2014, the trio—comprised of tenors Brad Robins, Casey Elliott, and Bradley Quinn Lever, along with award-winning composer and producer Stephen Nelson—has enchanted audiences worldwide. Their unique blend of classical and contemporary music has earned them critical acclaim and a devoted following.

With four EPs and four full-length albums to their name, GENTRI has consistently achieved remarkable success on

the Billboard charts, with nearly all their releases reaching #1. Their latest album,

"Hymns II," showcases their talent for crafting inspirational music, further solidi-

fying their position in the contemporary music landscape.

In addition to their impressive discography, GENTRI is recognized for their award-winning music videos, which have garnered over 400 million views and have been featured on major news outlets, including ABC World News, NBC Nightly News, and Inside Edition. Their performances have captivated audiences from coast to coast, as well as internationally, sharing the stage with iconic artists such as Kristin Chenoweth, Alfie Boe, Idina Menzel, and legendary bands like Journey and One Republic.

Join us for an unforgettable evening filled with the joy of the season as GENTRI brings their unique sound and festive spirit to Southern Utah University. Tickets are available now and can be purchased through the T-Bird Ticket office, at TBirdTickets.com, or by calling 435-586-7872.



PAROWAN CITY PRESENTS

Christmas IN THE COUNTRY

Wonderful Christmas Time

SCHEDULE OF EVENTS

- FRIDAY, NOVEMBER 29 -

HOLIDAY BAZAAR 10:00 AM - 5:00 PM
Iron County Fair Building • 50 South 600 East Clinic Way

- SATURDAY, NOVEMBER 30-

SANTAS PARADE 10:00 AM
Parowan Main Street. Santa will be at the Fairgrounds after the Parade

HOLIDAY BAZAAR 10:00 AM - 4:00 PM
Iron County Fair Building • 50 South 600 East

CANDLELIGHT WALKING PARADE 6:00 PM
Parowan Main Street • Line up at 500 North Main
Public invited to bring their own light/candle and join the parade

TOWN LIGHTING CEREMONY 6:15 PM
Town Square

CHRISTMAS VARIETY SHOW 7:00 PM
Aladdin Theater • Free Admission • Donations Accepted

SPONSORED BY:

VISIT Cedar City BRIAN HEAD

PAROWAN

For more information call 477-8190 or visit us at www.parowan.org

Utah Tech University
Sears Art Museum Presents

**ABOUT FACE/
HOW DO
YOU FIGURE?**

November 22, 2024
– January 10, 2025

Mary Ann Savage
by Dorthea Lange

Opening Reception
Friday, November 22, 2024
6:30 – 8:00 PM

Featuring
**Golden Age Portraits
by Semion Percin
in the Eccles Grand Foyer**

Sketch of a Business Man
by Semion Percin

Mon - Fri 9 am - 5 pm | Free
Closed Weekends & Holidays | www.searsart.com
225 S. University Ave. St George, Ut 84770
Located In The Dolores Doré Eccles Fine Arts Center

UT SEARS ART MUSEUM UTAH TECH UNIVERSITY

ST GEORGE ARTS CENTER

RAP

Utah Division of Arts & Museums

OUTDOORS

HIKING SOUTHERN UTAH: SAND BENCH TRAIL, ZION NATIONAL PARK

By Tom Garrison

Location: Zion National Park, Utah
Difficulty: Moderately strenuous due to walking in loose sand most of the hike and many ascents and descents, some fairly steep. (It was a strenuous hike for people in their 70s as we are.)
Average Hiking Time: About two to three hours at a leisurely pace. Elevations: 4,230 feet trailhead elevation with about a 550 feet elevation change from the trailhead to the highest point.
Family Friendly: It would be challenging for small children. Getting There: From St. George drive to Hurricane via Interstate 15 and State Route 9. In Hurricane stay on State Route 9 and follow the signs to Zion National Park. It is about 45 minutes driving time from St. George to Zion.

The trailhead is at the Court of the Patriarchs shuttle stop. (The fourth stop on the Zion Canyon Shuttle in the main canyon.) The elevation is 4,230 feet with about a 550 feet elevation change from the trailhead to the highest point for this approximately four mile round trip hike. The sky was a deep Utah blue and the temperature in the mid-70s as we began the hike about 10:00 am.



We walked across Zion Canyon Scenic Drive and followed the trail sign heading west and after a short distance the trail intersected the main trail. We went left (west) and within a couple hundred yards or so came to a large water tank and small building at the end of a service road. We followed the trail sign and continued west and soon crossed the Virgin River on a foot-bridge. After a quarter mile in mostly open area, we came to another trail intersection and went left (west) and soon turned south. All along this first section of the trail are great views of the peaks in the Court of the Patriarchs to the west.

We continued south shaded by cottonwood trees and soon crossed Birch Creek on strategically placed rocks and within another quarter mile or so came to the signed Sand Bench Loop intersection, 2 1/2 miles for the loop. The loop ascends and then descends from the bench.

We did the loop clockwise, taking the left or eastern, fork. That way we had relatively firm ground, a lot of flat rocks and some deep sand on the ascent, and mostly deep sand on the descent and avoided a real slog on the way up. The eastern fork is quite wooded, providing shade from the hot sun during our hike. Because it is a woodland, within the first

half mile of the loop we experienced a rare treat in a national park with several thousand visitors a day—wild animals within 15 feet of us. We first saw a small deer nosing around near the trail, then a flock of six wild turkeys scurrying around and pecking for food. Although this is not a popular hike with hundreds of people every day, these animals were clearly accustomed to seeing humans. Of course, we also saw the obligatory chipmunks and lizards.

This part of the hike offers great views, from two overlooks, of the Virgin River and Zion Canyon Scenic Drive, several hundred feet below the bench, and the towering reds, oranges, and browns of the canyon walls on both sides of the canyon are stunning. Scattered about in this area were some colorful sandstone boulders, relics from the landslide (that created the bench) from the high cliffs above.



After about 1 1/4 quarter mile from the beginning of the loop, where the trail begins to circle back to the western side of the loop, we came upon a rest area—a small clearing with a picnic table and horse corral. The trail then headed north in a wooded area on the return part of the loop. Soon we crossed a large open grassland and the trail became deep loose sand for the remainder of the loop. We reached the loop sign and headed back to the trailhead.

This is a fun, fairly strenuous hike (strenuous for folks in their 70s as we are) with varied habitats along the way—woodland, riparian, scrub, and sandy meadows—creating a sometimes subtle and beautiful adventure with amazing views of lower Zion Canyon. This approximately four mile trek round trek took us about three hours at a leisurely pace with many photo stops. It is great if you want to avoid the crowds that dominate more popular hikes, we only saw eight people on our hike.



Beyond the southern park entrance station, continue less than 100 yards and turn right (southeast), cross a bridge over the Virgin River, and enter the Visitor Center parking lot. Park, walk back to the Visitor Center, and get in line for the Zion Canyon Shuttle. From March through November, since no private vehicles are allowed north of Canyon Junction, you must take the shuttle or walk. Even if you are doing this hike when private vehicles are allowed on Zion Canyon Scenic Drive, it is easier—parking is very limited at the trailhead—to take the shuttle to the trailhead.

Sand Bench Trail is deceptive. Only about four miles round trip, on a map it looks easy. However, this trail is mostly deep sand with many ascents and descents, some pretty steep. On the other hand, this moderately strenuous hike features spectacular views of lower Zion Canyon.

Sand Bench Trail is fairly unknown and generally not a busy trail. Beware of horses and horse pee and poop, it a popular horse trail from March through October. The bench, upon which the loop part of the trail traverses, was created by an ancient landslide.

Fortunately, we live close to spectacular Zion National Park. Included in its boundaries are some demanding hikes—Angel's Landing, The Narrows, The Subway, Hidden Canyon, and others. We have done them all. Sand Bench Trail is now included in those demanding hikes with amazing views.

In 1919 Congress established Zion as Utah's first national park. Diversity dominates the 229 square mile park. Diversity in habitats with elevations ranging from 3,600 to 8,700 feet and including arid desert, woodland, coniferous forest, and riparian environments. Diversity in life forms with 69 species of mammals, 208 birds, 29 reptiles, six amphibians, and nine fish. And diversity in geology with mountains, buttes, mesas, arches, and, of course, canyons.

From St. George my wife Deb and I began our mid-week early October adventure by driving to Zion National Park. Stopping at the south entrance station we breezed through with our senior pass (for ages 62 and above) pay \$80 once and you can enter any national park forever with no additional fee. The normal entrance fee is \$35 per private vehicle.

Find more hikes at SUnindependent.com

PLEASE DONATE TO THE SHIWITT TOY DRIVE!

Last year the drive helped over 300 children!
 Plus funded numerous student scholarships.
 Also, a portion went to assist individuals in the community.

DONATIONS can be made at M&S Turquoise,
 Email (msturq@msn.com), by phone (435-632-8407)
 or venmo (@jamesmsev).

CALENDAR

How To Use This Calendar: Begin by reviewing the 'Multi-Day Events' section to find specific dates or event types happening over multiple days. For weekly reoccurring events go to 'Events by Day.' Then explore 'Events By Date' for date-specific events.

Multi-Day Events

SO U COMEDY IMPROV - FAMILY FRIENDLY Nov. 2, 16, and Dec. 7, 21, 7 PM. Join us for a one-of-a-kind Improv show! Your suggestions are used to inspire hilarious scenes and characters made up on the spot. Every show is unique! Doors open 30 min before showtime. The Electric Theater, 68 E. Tabernacle St., St. George.

SO U COMEDY IMPROV - UNCENSORED Nov. 2, 16, and Dec. 7, 21, 9 PM. Join us for a one-of-a-kind Improv show! Your suggestions are used to inspire hilarious scenes and characters made up on the spot. Every show is unique! Doors open 30 min before showtime. The Electric Theater, 68 E. Tabernacle St., St. George.

ZION PLEIN AIR ART Nov. 5, 6, 7, and 9. Beginning with a welcoming session at the Worthington Gallery. The artists will then spread across Zion, transforming the canyon into their outdoor studios, capturing diverse landscapes throughout the park. At the conclusion, attendees can acquire original pieces of art through the Silent Auction Visit zionpark.org for more information. Worthington Gallery, 789 Zion Park Blvd., Springdale

KATRINA BREE AT CASABLANCA Nov. 1-2, 8 PM. Showtimes may vary. R&B, funk, dance, oldies, and classic rock. Free admission. 21 or older. Skydome Lounge, 950 West Mesquite Blvd., Mesquite.

TERRY WAYNE PROJECT AT CASABLANCA Nov. 5 & 19 6 PM, and Nov. 6 & 20 7 PM. Showtimes may vary. R&B, funk, dance, oldies, and classic rock. Free admission. 21 or older. Skydome Lounge, 950 West Mesquite Blvd., Mesquite.

IRON MISSION DAYS Nov. 8-9, 9 AM. Join us for Iron Mission Days, a special community event featuring living history, pioneer craft demonstrations, and hands-on activities. Admission is \$4 per person or \$20 per family. Frontier Homestead State Park Museum, 635 N. Main, Cedar City.

MODEL RAILROAD TOUR GREATER ST GEROGEE AREA Nov. 8-11. Enjoy model railroads operating on all scales, with multiple trains operating, live volcanoes, towns, and more. ColorCountryTrains.org. Various locations throughout St. George.

KARAOKE WITH JIMMY AT ADRIA'S Nov. 8, 15, 22, and 29. 7 PM. Chris Paul Band on Nov. 16. 86 S. 200 W., Kanab.

YELLOW BRICK ROAD AT CASABLANCA Nov. 9, and 23, 8 PM. Since 1997, Yellow Brick Road has been reshaping the Las Vegas entertainment culture by bringing rock music to the forefront of what was once known as "the lounge scene". 21 or older. 950 W. Mesquite Blvd., Mesquite.

GREGG PETERSON BAND AT CASABLANCA Nov. 12-13, and 15-16, 6 PM. Showtimes may vary. Classic Rock, Variety, and dance band. 21 or older. 950 W. Mesquite Blvd., Mesquite.

JUBILEE OF TREES Nov. 21-23. Jubilee of Trees has been the keystone philanthropic event in the St. George region for over 40 years. Supporting critical healthcare services. Dixie Center, 1835 Convention Center Dr, St. George.

RAMONA'S CHRISTMAS VARIETY SHOW Nov. 21-Dec. 6, 6 PM. Join Rattlin' D Playhouse for an evening of big laughs, good food, and great music! The Rattlin' D Playhouse, 63 S. 100 W., Hurricane.

SWEET CHARITY Nov. 22-23, and Dec. 2, 6, 7:30 PM. SUU's Department of Theatre, Dance, and Arts Administration presents Sweet Charity. Visit Utah Shakespeare Festival Box Office for tickets or at Bard.org/tdaa, or by phone at 435 586-7878. Randall L. Jones Theatre, 300 W. Center St., Cedar City.

SENIOR EXPO Nov. 12-14, 2 PM. Dixie Center, 1835 Convention Center Dr., St. George.

IN-A-FECT AT CASABLANCA Nov. 26, 6 PM., and 27, 7 PM. In-A-Fect is a multi talented five piece unit with a universal sound & sizzling harmonies. Pop, Rock, R&B Classics, Hip-Hop, Old School Funk & a touch of Motown. 950 W. Mesquite Blvd., Mesquite.

LIVE NATIVITY Nov. 29-Dec. 23, 7 PM. This is a 20-minute performance of the Nativity Story. Tuacahn Amphitheatre, 1100 Tuacahn, Ivins.

CHRISTMAS IN THE COUNTRY Nov. 29-30, 10 AM. Holiday Bazaar, Santa's Parade, Santa will be at the Fairgrounds after the Parade Holiday Bazaar, Candlelight Walking Parade. 50 S. 600 E. Clinic Way, Parowan.

ZION CANYON ARTS & CRAFTS FAIR Nov. 29-30, 10 AM. A wonderful opportunity to support local artists, find one-of-a-kind gifts, and immerse oneself in the creative spirit of the community. Z-Arts Canyon Community Center, 126 Lion Blvd., Springdale.

HOT ICE BAND Nov. 29, 6 PM., and Nov. 30, 7 PM. Showtimes may vary. Motown, R&B, Country, Classic Rock, 50s, 60s & Latin! Must be 21 or older. 950 W. Mesquite Blvd., Mesquite.

HOLIDAY TREE JUBILEE Nov. 30, and Dec. 2, 3, 5 PM. See Santa and an amazing display of decorated Christmas trees to help kick off the holiday season! Proceeds go to our local kids and teens in need. Heritage Theater, 105 N. 100 E., Cedar City.

UNMATCHED GOLF AND HOSPITALITY

BOOK YOUR GOLF GROUP WITH CASABLANCA RESORT & CASINO



CALL TO BOOK YOUR RESERVATION AND TEE TIME TODAY



Group leaders receive a complimentary room and golf at no charge* when playing with your group at one or both of our courses (CasaBlanca and Palms). *A minimum group of 10 rooms and 16 golfers is required.

1.877.438.2929

casablancaresort.com/golf · Mesquite, Nevada · One Hour North of Las Vegas

CALENDAR

KANAB HOLIDAY PARADE AND TREE LIGHTING 7 PM. Holiday Light Parade, 6:30 PM - Parade line up, E. 200 S. 6:45 PM - Tree Lighting, in front of Kanab Center, 7 PM - Judging of floats will take place at Kanab Center front parking lot on 100 E. following the parade. After Party at the Kanab Center Kanab Center, 20 N. 100 E., Kanab.

DICKENS' CHRISTMAS FESTIVAL Nov. 2-6, 10 AM. Not just another craft show but a unique and unusual entertainment and shopping experience. Olde English shops, hundreds of period costumes, fortune tellers, orphans, royalty, and Father Christmas! Dixie Center, 1835 Convention Center Dr., St. George.

KANAB POLAR EXPRESS Dec. 2-6, 6 PM. Enjoy a ride on Kanab's Polar Express to the North Pole, where we will visit Santa's Sleigh Shop. Tickets to Santa's Sleigh Shop are included in the Polar Express ticket. Purchase Santa's Sleigh Shop tickets if you are not riding the train. Arrive 10 minutes before your train ride. Levi Stewart Memorial Park, 288 W. Center St., Kanab.

SUU BALLROOM DANCE COMPANY FALL SHOWCASE Dec. 6-7, 7:30 PM. Tickets available for pre-purchase from members of the Ballroom Dance Company for \$5, or purchase at the door for \$10. Southern Utah University, 351 W. University Blvd., Cedar City.

HARVEY Nov. 1-2, 7 PM. All Veta wants is for her daughter, Myrtle Mae, is to have a decent place in society for her and her brother, Elwood. Elwood's best friend and constant companion is a six-foot-tall white rabbit named Harvey, whom only Elwood can see. Heritage Theater, 105 N. 100 E., Cedar City.

DESERT HILLS HIGH: SHREK THE MUSICAL Nov. 12-16, 7 PM. Desert Hills High School, 828 E. Desert Hills Dr., St. George.

PICNIC BY WILLIAM INGE 7:30 PM. Nov. 14-16 and 19-23. The women of a quiet neighborhood on the wrong side of the tracks are preparing for the annual picnic. What happens next is pure Americana. Eccles Fine Arts Center, S. 700 E., St. George.

A CHRISTMAS CAROL Nov. 22-Dec. 21, 7:45 PM. Ebenezer Scrooge despises Christmas and believes personal wealth is more valuable than friendship, happiness, or the comfort of those around him. Tuacahn Amphitheatre, 1100 Tuacahn, Ivins.

ENCORE PRESENTS A CHRISTMAS CAROL: A NEW MUSICAL Nov. 30, and Dec 2, 5, 6, 7, PM. A Christmas Carol returns this year to St George! Electric Theater, 68 E. Tabernacle St., St. George.

WINTER MUSICAL MATINEE "ELF" Nov. 5-6, 7 PM. Cedar High School, 166 W. 1925 N., Cedar City.

STEEL MAGNOLIAS Nov. 6-8, 11, 12, 7:30 PM. Welcome to the PAC. SGMT is hosting this beautiful show at the newly renovated PAC. Performing Arts Campus, 905 S. Main St., St. Georg

ABOUT FACE/HOW DO YOU FIGURE Nov. 20-Jan. 10. Sears Art Museum Exhibit/Reception: Nov. 20, 6:30-8 PM. This exhibition will explore the human form and face in myriads of ways. Sears Art Museum, Eccles Grand Foyer, 155 S. University Ave., St. George.

IN FLUX: SHIFTING PARADIGMS Nov 1-23, 10 AM. Artists who employ abstraction to represent life's transitions, mental and emotional states, and human connection, inviting a range of interpretations and responses; visual diaries of transformation underscore life's upheavals and explore revision, harmony, and dissonance. St. George Art Museum, 47 E. 200 N., St. George.

BOUNTIFUL HARVEST Oct. 11-Nov. 14, 9 AM. Reception and awards are on Oct. 11 from 6-8 PM. Artists display their original artworks, such as paintings, pastels, colored pencils, photography, and original 3-D media. Red Cliff Gallery, 220 N. 200 E., St. George.

GK REISER: STEPPING STONES Sept. 13-Nov. 8. Reception: Sept. 13, 6:30-8 PM. For over a decade, the enigmatic GK Reiser worked in isolation in his Escalante, Utah workshop, transforming paint and wood into art. For the first time, Reiser is unveiling his creative works to the public in the Eccles Grand Foyer-Sears Art Museum, 155 S. Univ Ave., St. George.

KANAB ARTS BOARD FOURTH QUARTER EXHIBITION The Kanab Arts Board Exhibition is ending the year featuring two of our local mixed media artists. At the Kane County Hospital, we have Linda McCowan with a collection entitled 'Heartscape: Mixed Media, Poetry & Beyond. The reception will be held October 17 from 5:30-6:30 PM at the Kane County Hospital library. Kane County Hospital, 355 Main St., Kanab.

CEDAR CITY DAUGHTERS OF UTAH MUSEUM 10 AM. Artifacts, Photos, and Histories of our Iron County Pioneer settlers who paved the way for our established communities of today. Tools, Clothing, Hats, Dolls, Furniture, Books, A Spinning Wheel, and Organ are on display. Cedar City Visitors Center, 581 N. Main St., Cedar City.

Events by Day

MONDAYS

FARMERS MARKET & LIVE MUSIC AT THE BIT & SPUR 5 PM. The iconic Bit & Spur Restaurant and Saloon announces its vibrant live music series and farmers market events, now through the Fall. Weather-permitting. Bit & Spur, 1212 Zion Park Blvd., Springdale.

TUESDAYS

MAKE ART TUESDAYS 11 AM. Everyday is better when you make art! Join us every Tuesday from 11 to 12 p.m. to create unique projects that you can take home. St. George Children's Museum, 86 S. Main St., St. George.

TRAUMA & LOSS WOMEN'S GROUP 6 PM. Trauma & Loss Group for Women. 640 E. 700 S., Ste. 101, St. George.

KARAOKE TUESDAY AT WAREHOUSE BAR + KITCHEN 8 PM. 432 N. 100 W. Cedar City.

WEDNESDAYS

FREE POOL WEDNESDAY'S AT WAREHOUSE BAR + KITCHEN Warehouse Bar + Kitchen, 432 N. 100 W., Cedar City.

GAMER CLUB 3 PM. Teens and 'tweens who love anime, gaming, or both meet for book discussions, games, and great times. Santa Clara Library, 1099 Lava Flow Dr., St. George.

MIDVALLEY: FARMERS MARKET 4 PM. Come for live music, jump house, face painting, and more. Find some beautiful, original, and unique items for your loved one, all the crafters and artisans are local and everything is handmade by them. This is a Project of The PEACE Guild - Text: 435 704-6916. 780 Midvalley Rd., Enoch.

ROWLEY'S RED BARN WEDNESDAY MARKET 5 PM. Come hang with us at Rowleys Red Barn every Wednesday Night, for some good times and great vibes. A Perfect destination for Date night or midweek Family outing. We have live music, awesome vendors, and yummy food trucks. Rowley's Red Barn, 471 W. Telegraph St., St. George.

KARAOKE AT BEAVER DAM BAR 5:30 PM. Every Wednesday with Gayle Louise (SAME TIME as Mesquite) (435) 229-9725. 411 Co Hwy. 91, Littlefield.

THURSDAYS

SUNRISE ROTARY 8 AM. Meets every Thursday at Scotty's Restaurant at the Falcon Ridge Golf Course. e contact: Deb Parsley deparsley@kwcom. Falcon Ridge Golf Course, 1024 Normandy Ln., Mesquite.

KARAOKE B-I-N-G-O! 6:30 PM. Karaoke B-I-N-G-O! with "Gayle Louise". Two ways to win! Not based on talent. SING-PLAY-WIN! "KORAL KAFE Might As Well Lounge" (435) 627-6262. 2400 N. Town Center Dr., Washington.

DESERT COMMUNITY STRINGS AND NEW HORIZONS STRINGS 5:30-7:30 PM. Open to all ages and abilities. If you used to play a stringed instrument and would like to get back to the joy of music, this group is definitely for you. desertstrings.org. Basement of St. George Medical Building, 736 S. 900 E., St. George.

KARAOKE WITH DJ LANCE AT MIKES TAVERN 9 PM. 90 W. Hoover Ave., Cedar City.

FRIDAYS

CRAFTIVITY 11 AM. Join this creative activity every Friday where together, guests and volunteers work to make easy, fun, and educational crafts. St. George Children's Museum, 86 S. Main St., St. George.

CEDAR STREET FEST 3 PM. Local businesses, artisans, and performers come together for a weekly celebration of Cedar City's unique culture. Enjoy music, food, and fun, including live music, theatrical performances, stand-up comedy, bouncy houses, art classes, games, Artisans Fair, Farmers Market, drive-in movies, and more. Visit Cedarstreetfest.com. Cedar Fun Center, 170 E. Fiddlers Canyon Rd., Cedar City.

OTC COMEDY 8 PM. Every Friday. Tickets are \$10. Advanced tickets available for purchase at otccomedy.com. Off the Cuff Theater, 913 S. Main St., Cedar City.

LIVE MUSIC AT HOME ON THE DESERT RANGE 7:30 PM. Join Home on the Range & Navajo Crafting Co as they welcome local duo Wes & Trekker performing for their first night of live music. Come shop, eat some homemade ice cream, sip some craft soda, and relax to the music. Home on the Desert Range, 97 W. Center St., Cedar City.

SATURDAYS

CEDAR CITY FARMERS MARKET 9 AM.-1 PM. Come for the farmers, food, and artisans as well as drawings, bingo, and more! For information visit them on Facebook, Cedar Saturday Market, or call Nancy (435) 463-3735. IFA, 905 S. Main St., Cedar City.

TUACAHN SATURDAY MARKET 9 AM. A fun craft festival set in a beautiful and scenic canyon. Every Saturday morning we have live entertainment, crafters, vendors, food and fun. In the event of rain, we cozy up under the cover of the Tuacahn Amphitheater plaza. Tuacahn Amphitheatre, 1100 Tuacahn, Ivins.

DOWNTOWN FARMERS MARKET 10 AM. Every event showcases over 50 vendors from all over Washington and Iron Counties bringing you the best in locally grown produce, pasture-raised meats, raw cheeses, and unique artisanal products. Enjoy local food and goods while sitting in the shade on our green grass, jamming out to local live music. This is truly an event for the whole family. Every Saturday. Vernon Worthen Park, 300 S. 400 E., St. George.

THE SO U COMEDY THEATER
Presents a
Holly Jolly Improv Show
Special Guest Host
7:00 PM
FAMILY FRIENDLY
9:00 PM
Naughty
December 21st

HOLIDAYS AT THE HOMESTEAD
NEW SCHEDULE: WEDNESDAY DECEMBER 4TH
THURSDAY DECEMBER 5TH
FRIDAY DECEMBER 6TH
MONDAY DECEMBER 9TH
5:30-8 PM EACH NIGHT
\$4 PER PERSON, \$20 PER FAMILY (UP TO 8 PEOPLE)
SANTA - CRAFTS - PERFORMANCES - LIGHTS - FUN

LIGHTS AT THE HOMESTEAD
5:30-8 PM EACH NIGHT
DONATIONS APPRECIATED
ENJOY THE FESTIVE DECORATIONS

FRONTIER HOMESTEAD STATE PARK 635 N MAIN ST. CEDAR CITY

FRONTIER HOMESTEAD STATE PARK
where history becomes your story
an interactive historic experience

FRONTIER HOMESTEAD STATE PARK
635 North Main Street, Cedar City | (435) 586-9290
FRONTIERHOMESTEAD.ORG

CALENDAR

BEST FRIENDS GENTLE YOGA 9 AM. Join us for a 45-minute gentle yoga class for all levels and ages at Best Friends Roadhouse and Mercantile Best Friends Roadhouse and Mercantile, 30 N. 300 W., Kanab.

FESTIVAL CITY FARMERS MARKET 10 AM. Every Saturday behind I/G Winery. Free admission. Come and support local farmers by buying fresh and local year-round. Shop locally produced and grown fruit, vegetables, cheese, jam, bread, eggs, honey, farm products, and more. 45 W. University Blvd., Center St., Cedar City.

ADULT DUNGEONS & DRAGONS 2:30 PM. Join us for the adult Dungeons & Dragons club at the Springdale Library! Embark on epic quests, battle fearsome monsters, and unravel mysterious plots in this immersive tabletop role-playing game. Springdale Branch Library, 126 Lion Blvd., Springdale.

SATURDAY MOVIE MATINEE AT ST. GEORGE LIBRARY 2 PM. Washington County Library System, 88 W. 100 S., St. George.

AL-ANON FAMILY GROUPS WEEKLY MEETING 3 PM. Al-Anon Family Group is Back! Weekly meetings on Sundays. Mesquite Veterinary Clinic, 371 Riverside Rd. A, Mesquite.

Events by Date

Fri, Nov 1

"SPLASH OF COLOR" ART SHOW 9 AM. Red Cliff Gallery, 220 N. 200 E., St. George.

FIRST FRIDAYS AT KAYENTA 5:30 PM. Enjoy live music, food, and fun in the Kayenta Art Village, featuring film screenings and an art reception in the theater. Kayenta Center for the Arts, 881 Coyote Gulch Ct, Irvins.

Sat, Nov 2

CHARITY CAR SHOW 7:30 AM. This community event is free and a must-attend! Visit SandHollowResort.com to register today. Sand Hollow Resort, 5665 W. Clubhouse Dr., Hurricane.

HOODFEST 10 AM. Dixie Technical College's annual Hoodfest Car Show showcases stunning vehicles to help raise funds for student scholarships. Free to the public. Register at DixieTech.edu/hoodfest/. Dixie Technical College, 610 S. Tech Ridge Dr., St. George.

DAY OF THE DEAD It's time for our annual celebration with pop-up art exhibits, a live dance performance from Ballet Folklorico Anayansi, children's crafts, a community Ofrenda, floating food trucks, remembrance tree, face painting, and more! Saint George, 47 E. 200 N., St. George.

TRIBUTE TO THE BLUES 7 PM. From raw emotion in early blues lyrics to today's blues-infused rock and jazz, Dealt A Straight Band highlights how this genre remains a powerful and evolving force in music history. Mesquite Community Theatre, 150 N. Yucca St. Ste. 22, Mesquite.

UNIVERSITY ORCHESTRA EVENING OF CONCERTOS 7:30 PM. Eccles Main Stage Eccles Fine Arts Center, S. 700 E., St. George.

CROSSING OPEN GROUND COLLECTIVE: AN INTRODUCTION 7:30 PM. Visit Center for the Arts for an incredible evening of music from award-winning artists building lasting relationships in Southern Utah. Center for the Arts at Kayenta, 881 Coyote Gulch Ct, Irvins.

Sun, Nov 3

SAINT GEORGE CHAMBER SINGERS 7 PM. Performing beautiful sacred music in the outstanding acoustics of the St. George Catholic Church. St. George Catholic Church, 259 W. 200 N., St. George.

Fri, Nov 8

PANGUITCH HOLIDAY CRAFT FAIR Fair Building, Panguitch.

USMC BIRTHDAY BALL 3:30 PM. Dixie Center, 1835 Convention Center Dr., St. George.

ET - FREE MOVIE NIGHT 7 PM. A night under the stars at The Redstone Theater. See the classic film ET for free. Grab your friends, bring snacks, and enjoy movie night out. The Redstone Theater, 29 W. Center St., Kanab.

THE PARTY AT CASABLANCA 8 PM. The Party is a high-energy cover band that is the trendiest and most fun band out there. The Party performs every single hit song from the 70s, 80s, & 90s, with many current songs from today. 21 and older. 950 W. Mesquite Blvd., Mesquite.

Sat, Nov 9

BRIO HOLIDAY BAZAAR 10 AM. Annual Holiday Bazaar with over 27 local artisans selling handcrafted pieces. Brio Clubhouse, 230 Clubhouse Dr., Washington.

A COUNTRY WESTERN JAMBOREE 2 PM. Tickets at the Mesquite Fine Arts Center - \$25 per person. Virgin River Hotel & Casino, Event Tent, 100 Pioneer Blvd., Mesquite.

GARY ALLAN 7 PM. A modern-day outlaw, Gary Allan has captivated fans, peers, and critics alike with his signature blend of smoldering vocals, rebellious lyrics, and electrifying live performances. Tickets start at \$60. Tuacahn Amphitheatre, 1100 Tuacahn, Irvins.

Sun, Nov 10

MASTER SINGERS: VETERAN'S DAY CONCERT 7 PM. Admission is free. Bring your friends and family and enjoy the Master Singers in concert again. Heritage Center Theater 105 N. 100 E., Cedar City.

Mon, Nov 11

WASHINGTON CITY VETERANS DAY CELEBRATION 11 AM. Please help honor and support the community's Veterans for their service and dedication to this great country with a parade & short program. Veterans Park, 75 E. Telegraph St., Washington.

VETERANS DAY DINNER 1 PM. Panguitch City, Panguitch.

VETERANS CELEBRATION All active or retired military and their guests are invited to enjoy a free buffet at Sierra's Buffet from 7 AM-9 PM or Mesa Buffet from 11 AM-9 PM. Veterans Don't forget to visit the loyalty club to receive your free veteran pin. We thank you for your service. CasaBlanca, 950 W. Mesquite Blvd., Mesquite.

Tues, Nov 12

UTAH TECH JAZZ ENSEMBLE 7:30 PM. Eccles Concert Hall Eccles Fine Arts Center, S. 700 E., St. George.

SYMPHONY ORCHESTRA CONCERT 7:30 PM. The SUU Symphony Orchestra, under the direction of Dr. Xun Sun. Heritage Theater, 105 N. 100 E., Cedar City.

GENTRI CHRISTMAS CONCERT 7:30 PM. Prepare to be swept away as GENTRI weaves their musical mastery, powerful harmonies, and heartfelt storytelling into a tapestry of pure Christmas wonder. Join us for an unforgettable night of music, laughter, and pure Christmas joy with GENTRI. Tickets at tbirdtickets.com. America First Event Center, 351 W. Center St., Cedar City.

Thurs, Nov 14

OSU - ROCK GOLD VOL. 2 7:30 PM. The electrifying world of Rock Gold: Volume 2, where symphonic rock fusion takes center stage. The synthesis of rock guitars, soaring vocals, and orchestral arrangements creates a supernatural experience for everyone from die-hard rock enthusiasts to classical music aficionados. Heritage Center Theatre, 105 N. 100 E., Cedar City.

Fri, Nov 15

CHRISTMAS TREE FESTIVAL Fair Building, Panguitch.

BERTOIA OPEN HOUSE 4 PM. Showcasing our updated collection of mesmerizing artworks and cattail sound sculptures. Bertoia was a mid-century modern giant of furniture design and abstract monumental sculpture. Door prizes. Harry Bertoia Foundation, 1449 N. 1400 W., Ste 11, St. George.

JAZZ ENSEMBLE ONE CONCERT 7:30 PM. Jazz Ensemble One performs under the direction of Dr. Adam Lambert. Heritage Center Theater, 105 N. 100 E., Cedar City.

Sat, Nov 16

ART PROVIDES ANNUAL BENEFIT & SOIRÉE 5 PM. 5 Years of Inspiration. We couldn't have reached this milestone without your incredible support, and we can't wait to celebrate with you! ART Provides, 35 N. Main St. (Upstairs), St. George.

TRIVIA WONDERLAND - NEW START K9 FUNDRAISER 5:30 PM. If you enjoy the challenge of a good game of trivia, buy your ticket now to join us for Trivia Wonderland. All proceeds will benefit our furry friends at New Start K9. Hilton Garden Inn - St George, 1731 S. Convention Center Dr., St. George.

Sun, Nov 17

YOGA AND WINE TASTING (WOGA) AT ZION VINEYARDS 10 AM. Come & Join us for Woga. That's Wine & Yoga. Held in our tasting room. Yoga is free. Wine Tasting \$25. 21+. 435-849-8813 ZionVines.com. Zion Vineyards, 5 Hidden Valley Rd., Leeds.

Mon, Nov 18

HOLLYWOOD IN UTAH 7 PM. An exclusive screening of the highly anticipated film Hollywood in Utah! This PBS Utah documentary marks 100 years of Hollywood filmmaking in Utah, and you're our special guest. PBS Utah producer Nancy Green and esteemed historian James D'Arc will provide an insightful Q&A session before the showing. Utah Tech University Dunford Auditorium, 261 S. 900 E., St. George.

Tues, Nov 19

ELECTRIC FILM SERIES 6 PM. On the third Tuesday of every month, join us for a free screening of a noteworthy film of the past at the historic Electric Theater. Each movie includes an intro and post-screening discussion. Food from local businesses and various surprises are expected, too! Electric Theater, 68 E. Tabernacle St., St. George.

Wed, Nov 20

THE DANCE HISTORIAN IS IN 11 AM. A New York Public Library For The Performing Arts Lecture Series. For more than 10 years, 'The Dance Historian Is In' at the Library for the Performing Arts has highlighted a diverse range of dancers and choreographers across history. Southern Utah University, 351 W. University Blvd., Cedar City.

Thurs, Nov 21

JUBILEE OF TREES EXCLUSIVE BREAKFAST 7 AM. A program hosted by the Intermountain Health Foundation with exclusive access to the 40th Annual Jubilee of Trees! Doors open at 7 AM, and breakfast will be served from 7-7:30 AM, with the program beginning promptly at 7:30 AM. Seating is limited. Dixie Convention Center, 1835 S. Convention Center Dr., St. George.

Fri, Nov 22

MOST WANTED AT CASABLANCA 8 PM. Showtimes may vary. Playing classic rock, disco, oldies, country, and everything in between. Free. 21 or older. 950 W. Mesquite Blvd., Mesquite.

DICK EARL'S ELECTRIC WITNESS AT HIVE 435 TAPHOUSE 9 PM. Dick Earl's Electric Witness - Solo. Hive 435 Taphouse, 61 W. St George Blvd., St. George.

Sat, Nov 23

DIXIE HIGH: ZION YOUTH SYMPHONY 2 PM. Dixie High School, 350 E. 700 S., St. George.

BEAUJOLAIS NOUVEAU FESTIVAL 6 PM. Celebrate the release of the 2024 Beaujolais Oath of the new "Compagnon's du Beaujolais" An authentic celebration and tribute to Les Sarmentelles and the opening of the new wine. Exquisite dining paired with fine local wines. Spotted Dog, 428 Zion Park Blvd., Springdale.

FRONTIER HOMESTEAD OPEN MIC NIGHT 7 PM. Come cheer on community members or show off your talents. Share your music, poetry, comedy, magic, or soliloquy. Admission is free. Every 4th Saturday. Call (435) 586-9290. Frontier Homestead State Park Museum, 635 N. Main, Cedar City.

UTU SYMPHONIC BAND CONCERT 7:30 PM. UTU Symphonic Band Concert. Eccles Concert Hall Eccles Fine Arts Center, S. 700 E., St. George.

Sun, Nov 24

GOBBLER CLASSIC GOLF TOURNAMENT 9 AM. Shotgun Start. 4 Person Scramble. Entry Fee \$75 per player. Entry Fee Includes Tournament Entry, Food, and Prizes. Palms Golf Club, 550 Peppermill Palms Blvd., Littlefield.

Mon, Nov 25

JAZZ & PERCUSSION CONCERT 7 PM. Cedar High School, 166 W. 1925 N., Cedar City.

Sat, Nov 30

CEDAR CITY LIGHTING CEREMONY 11 AM. Enjoy the Christmas Market, free train rides, and food Trucks; 4 PM pre-show activities Ugly Sweater Contest, Kid Craft Station, Carriage Rides \$15/person, and giveaways. Program Begins at 5 PM on the City Hall Stage with Performances, Santa's Arrival, and Downtown Lighting. Cedar City, 200 N. Main St., Cedar City.

Mon, Dec 2

CHRISTMAS IN DIXIE - CHRISTMAS TREE LIGHTING 6 PM. The First Monday after Thanksgiving. Veterans Park Annual Tree Lighting Ceremony. Free Hot Cocoa and Donuts while they last. Wagon rides to Covington Home to see Santa. Veterans Park, 75 E. Telegraph St., Washington.

Thurs, Dec 5

UTU HOLIDAY CHORAL CONCERT 7:30 PM. Eccles Concert Hall Eccles Fine Arts Center, S. 700 E., St. George.

Fri, Dec 6

PARADE OF LIGHTS - WINTER WONDERLAND 5:30 PM. Mesquite.

SAINT GEORGE CHAMBER SINGERS CHRISTMAS CONCERT 7 PM. Chamber Singers will join the St. George Children's Choir to perform beloved Christmas music at the historic St. George Tabernacle. St. George Tabernacle, 18 S Main St, St. George.

SUU HOLIDAY CONCERT - MUSIC MASTERWORKS SERIES 7:30 PM. This combined Choir, Orchestra, and Band concert is the fourth installment of the 2024-2025 Music Masterworks Series. Heritage Theater, 105 N. 100 E., Cedar City.

A RED ROCK HOLIDAY CELEBRATION 7:30 PM. Deck the halls and jingle all the way at "A Red Rock Holiday Celebration!" Featuring the Southwest Symphony and the angelic voices of Lieto Voices, this will be a festive extravaganza like no other! Get tickets at: <https://bit.ly/4ce5K1F>. Desert Hills High School, 828 E. Desert Hills Dr., St. George.

Find more events daily at SUIndependent.com

Bring the *Magic Back Again*

the Nutcracker

Nov. 22 @ 7pm
Nov. 23 @ 7pm

LIVE DANCE AND SYMPHONY
\$15/ADULT \$10/CHILD
KANAB HIGH SCHOOL AUDITORIUM

CHRISTMAS
FESTIVAL & DINNER
Dec. 7

ENTERTAINMENT,
MUSIC, GIFTS, SANTA
DINNER BY SEGO AND
SMALL ENSEMBLE MUSIC
KANAB CENTER

Scan QR Code for Details and Tickets

Joy to the World

2024 ZION CANYON HOLIDAY EVENTS

12/14/24 @ 7PM
LIGHT PARADE & SWEETS SOCIAL
PARADE STARTS ON CANYON SPRINGS DR., ONTO SR-9 TOWARD ZNP, LEFT ON LION BLVD. TO THE CANYON COMMUNITY CENTER. SWEETS SOCIAL AT THE COMMUNITY CENTER FOLLOWING PARADE (126 LION BLVD., SPRINGDALE)

12/21/24 @ 10AM
WREATHS ACROSS AMERICA
JOLLEY-GIFFORD CEMETERY, SPRINGDALE.
WREATHS WILL BE PLACED ON VETERAN'S HEADSTONES FOLLOWING A SHORT CEREMONY

12/31/24 @ 6PM
NEW YEAR'S EVE CELEBRATION & HYPNOTIST/COMEDIAN CHAD CHESMARK
AT THE CANYON COMMUNITY CENTER (126 LION BLVD., SPRINGDALE)
COME ENJOY LINE DANCING, DINNER FROM SOUTHERN GRAZED, & FOR THE FIRST TIME... A HYPNOTIST/COMEDY SHOW WITH LAS VEGAS HEADLINER, CHAD CHESMARK!

6PM LINE DANCING
7PM DINNER SERVED
8PM HYPNOTIST/COMEDY SHOW W/ CHAD CHESMARK

Welcome To Zion from Zion Guide!

Safety Tips For Zion

Emergencies

For 24-hour emergency response, call 911 or (435) 772-3322. The Zion Canyon Medical Clinic is located in Springdale near the south entrance to the park. For hours, please call (435) 772-3226. Other medical clinics are located in Hurricane. The nearest hospitals are in St. George, Cedar City, and Kanab.

Hydrate and use refillable water bottles

It is easy to get dehydrated while hiking and walking in the desert, so pack along extra water, and be sure to take rest and water breaks on long hikes. There are a number of places to refill your water bottles in Zion National Park including the visitors' center and Zion Lodge as well as a new hydration station at the Springdale bus stop in front of The Bumbleberry Inn and Zion Canyon Brew Pub.

Be cautious near steep cliffs

Falls from cliffs on trails can result in death. Loose sand or pebbles on stone are very slippery. Be careful of edges when using cameras or binoculars. Never throw or roll rocks because there may be hikers below you. Stay on the trail. Stay back from cliff edges. Observe posted warnings. Please watch children.

Watch for flash floods

All narrow canyons are potentially hazardous. Flash floods, often caused by storms miles away, are a real danger and can be life threatening. You are assuming a risk when entering a narrow canyon. Your safety is your responsibility.



Tips To Minimize Your Impact

Pack it in, pack it out & use recycling bins

Each month, Zion National Park pays many thousands of dollars to haul away waste collected from garbage cans and recycling bins. Your experience and that of everyone who visits Zion Canyon can be improved by never littering and making sure you pick up any trash you see along the way. Recycling bins are placed strategically throughout Zion Park, and it is highly encouraged for everyone to use them.



Please stay on the marked trails

Hiking off trails can lead to loss of vegetation, soil compaction, erosion, and unsightly scars on the landscape. Remember, if you bring it in, please pack it out.

Go before you go

It is always a good idea to use the restroom before you begin a hike since facilities are limited to select locations. If you do need to take care of your business, please pack it back out.

Be respectful to the wildlife

Feeding, harming, or capturing wild animals is illegal and can cause injury or death to the animal. Animals can become aggressive beggars when fed.

Please leave it how you found it

It is illegal to remove anything from Zion National Park, including flowers, rocks, or anything else that you might find. Do not write or carve on natural surfaces.

SOUTHERN UTAH'S NEWEST DESTINATION ATTRACTION!

ONCE UPON A TIME IN AMERICA MUSEUM

*A Little Outside Of Town...
A Lot Out Of The Ordinary!*

CHECK WEBSITE, GOOGLE
OR FACEBOOK FOR

MUSEUM & GIFT SHOP HOURS

FROM HISTORY TO HOLLYWOOD, TO WILDLIFE & HORSEPOWER,
TO ODDITIES & VERY RARE FINDS... COME AND EXPLORE!



**MENTION THIS AD & GET
\$2 OFF ADMISSION!**

STOP INTO THE "SMOKE WAGON SALOON" &
ENJOY A "FULL BAR" & GREAT FOOD!

Check Website Or Google For Days & Hours

6746 East Hwy 89, Kanab, Utah 84741
435 - 691 - 3452 ~ info@mgpc.net

www.onceuponatimeinamericamuseum.com **FIND US ON**

WINE TASTING



LEEDS, UTAH
5 Hidden Valley Rd • 84746
(12 miles north of St. George)

Gift Baskets are Available
Includes your choice of Wine,
Zion Vineyards Wine Glasses, (2),
a Winekey, Dark Chocolate
and Soap made from our Wine.
Open 7 Days a week Noon til 6pm
Fri, Sat and Sun Noon til 7pm
No Reservations Needed

435-216-1340

WOGA, that's Wine and Yoga.

We will uncork our chakras on

Sunday Nov 17th,
at our Tasting Room.

You must be 21 or over.

Yoga is no Cost,
and starts at 10am.

Then stay for a Wine tasting.

The Wine Tasting is \$25

All Yoga Levels Welcome

Charcuteries are available \$25



NEW Discount Pharmacy Now Open in Hurricane!

Locations in St. George Hurricane, Cedar City and Springdale

Welcoming new patients
Integrated medical, behavioral, dental, & vision care
Treatment of illness, injury, and chronic conditions
Women's health care

Walk-In and same-day care
Discount drive-thru pharmacy*
Sliding scale fees based on income and family size
Compassionate, experienced providers



Special medication pricing available for qualified patients through the 340B Pharmacy Program.

Additional Benefits Include:

- ✓ We bill most insurances
- ✓ 90-day supplies of maintenance medications available
- ✓ Provider collaboration
- ✓ Friendly, knowledgeable staff
- ✓ Fast turnaround
- ✓ Medical and Behavioral Health Clinic on site

Now Accepting New Patients

Call 435-359-9525 for pharmacy | 435-986-2565 for medical & behavioral | familyhc.org

Southwest Utah Community Health Center, doing business as Family Healthcare, is a registered nonprofit organization. Information concerning Family Healthcare, including financial information and charitable purposes, may be obtained without costs from Family Healthcare, 2276 E. Riverside Dr. St. George, Utah, 84790. Family Healthcare is committed to donor privacy and does not rent or sell our mailing lists.

Top Things To Do In Zion

Get some great hiking in

Zion National Park is known for its scenic landscape and unrivaled hikes. No matter your fitness level, there are hikes here for you. Please go to ZionGuide.com to see the details on many area hikes.

Spend a day in Springdale

Springdale is unique to our national park system in that it is almost completely surrounded by Zion National Park. So when you're in Springdale, you're right in the middle of Zion Canyon.

Catch an event

Not only does Zion Brew Pub have live music every Saturday, the property also hosts a handful of events throughout the year, as do the Bit and Spur restaurant, Tanner Amphitheater, Bumbleberry Inn, Wildcat Willies, and several other locations.

Try a guided tour

Jeep, helicopter, ATV, canyoneering, horseback riding, or mountain biking, guided tours are all available. Many of these tours take you outside Zion National Park boundaries and give you a unique perspective on Zion's canyons and plateaus from surrounding areas of southern Utah. Check out ZionGuide.com for listings and ads.

Visit the east side of Zion and spend a day in Kanab

The east side of Zion is generally less crowded, making hikes more accessible and private. These are some of the most enjoyable hikes in the canyon. You can spot wildlife you won't see elsewhere in the canyon. The city of Kanab, situated east of the canyon, is full of unique attractions, like the Little Hollywood Movie Museum and the Best Friends Animal Sanctuary.

Take lots of pictures, leave only footprints

Be sure you've got extra charged batteries, smartphone cables, and memory cards so you can capture all the magic of Zion National Park. Additionally, there are numerous photo tour and guiding companies to assist you. Thank you for visiting the Zion National Park area.

Tips To Maximize Enjoyment

Go on a less crowded hike

The most visited Zion hikes have a lot of competition. If you'd rather not feel like you're in the line at a theme park, consider seeking out a less traveled path. Check out our feature, [Less-Traveled Zion Hikes](#), in this issue.

To avoid the crowds, go early or late in the day

Consider getting up extra early or trekking out midday after the initial rush has flooded in.

Consider coming back again in the low season

Starting in the late fall, the number of visitors to Zion Canyon starts to dwindle, and by December it's significantly less than in the heat of the summer. It is simply a different experience to see Zion in the winter with the snow-capped monoliths. Most hikes are still accessible and are less crowded. You can also drive to the Temple of Sinawava parking lot. The shuttles stop running from November until March.

Check out Kolob Canyons & Kolob Terrace Road

With gorgeous open spaces and plenty of dirt roads to explore, Kolob Terrace Road is one of Zion's best kept secrets. You'll notice the air getting cooler as you gain elevation, and you'll find plenty of beautiful views worth stopping at for a quick photo op. The Kolob Terrace Road turnoff is in Virgin, so watch for signs. Portions of the Kolob Canyon District of Zion National Park are reached via Exit 40 on Interstate 15.



The
Spa

at cable mountain lodge

— Zion Nat'l Park Entrance —

Massage | Facial | Body Treatments



OPEN DAILY

Reserve Now: 435.619.8300

Locals Welcome 15% Off
cablemountainspa.com

ZION PROSPECTOR



Specializing in Utah semi-precious minerals, fossils and jewelry

"Take home a piece of Utah!"



694 Zion Park Blvd • At shuttle stop #4
Open 9 am to 9 pm, 7 days • 435-772-0472



WELCOME TO YOUR ONE STOP SHOP

Zion T-Shirts, Hats, and Souvenirs •

Unique Gifts • Hiking Gear • Ornaments • Jewelry • Stickers • Games
• Toys • Rocks • Teva • Kavu • Hydro Flask • CamelBak



145 Zion Park Blvd. Springdale, UT (435)-772-2420
TrailheadGiftsAndGear.com

Customer parking available in the Zion Canyon Village at the South entrance to Zion National Park

Springdale Utah Town Map

Family HEALTHCARE
Making Lives Better for **20 YEARS**

NOW SERVING
Zion Canyon at
120 Lion Blvd
Springdale, UT
435-772-3226 ⑥

Your Accessible Healthcare Home!

HAPPY CAMPER MARKET
fresh food • gear • souvenirs
95 Zion Park Blvd at Zion NP Entrance

Park House Cafe
Now Serving Beer & Wine
Open 8am 7 DAYS
BREAKFAST LUNCH
SMOOTHIES
ORGANIC COFFEE
FRESH SALADS
VEG FRIENDLY
Sunday Brunch
1880 Zion Blvd • 435-772-0100
www.ParkHouseCafeZion.com

West GALLERY
DAVID J. FINE ART PHOTOGRAPHY
photography pottery paintings
801 Zion Park Blvd ~ Springdale, UT
Across from La Quinta
www.davidjwest.com • 435.772.3510 ⑧

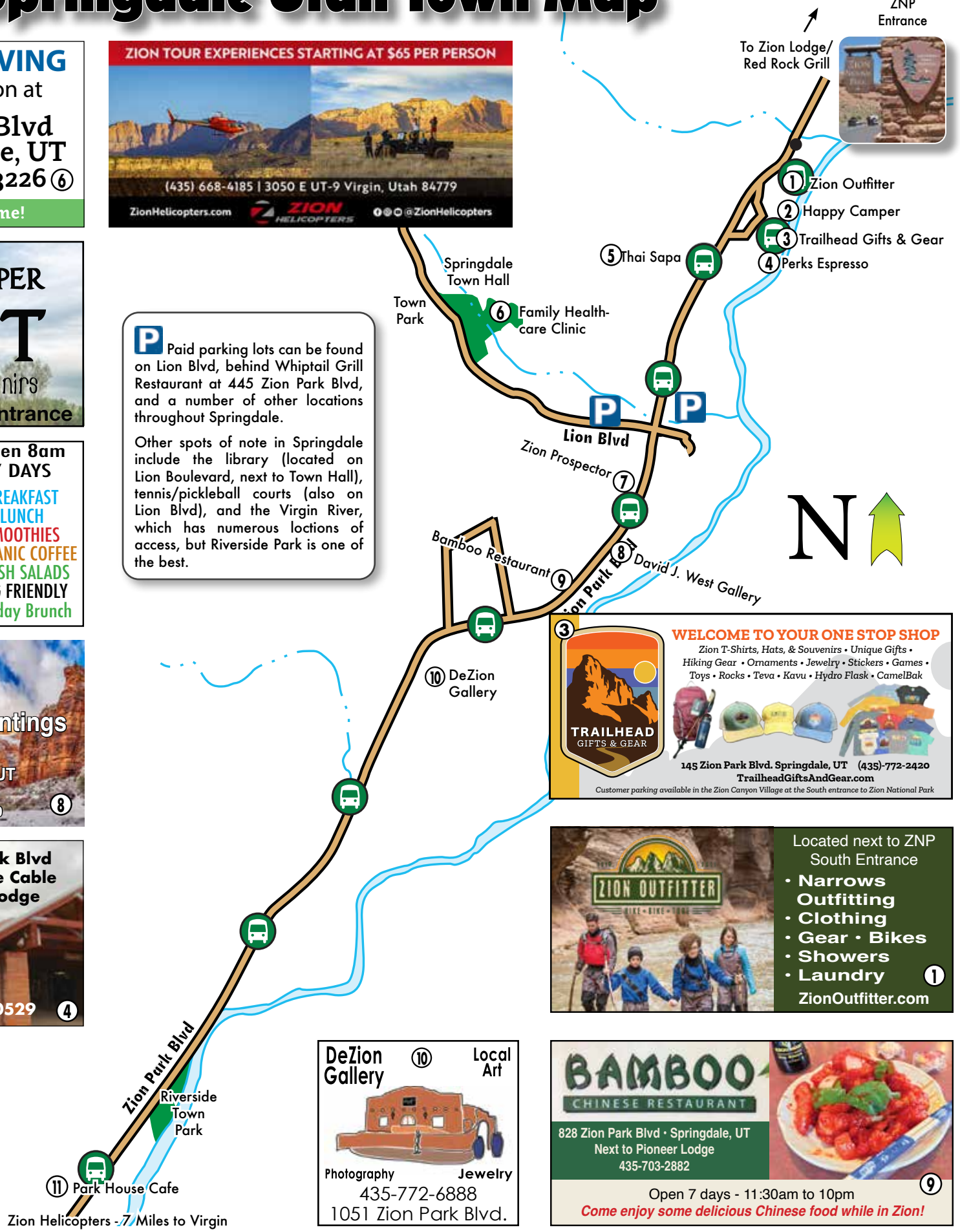
ESPRESSO & MORE PERKS
147 Zion Park Blvd
Located in the Cable Mountain Lodge
(435) 772-0529 ④

ZION PROSPECTOR ADVENTURES
Specializing in Utah semi-precious minerals, fossils and jewelry
"Take home a piece of Utah!"
694 Zion Park Blvd
Open 9 am to 9 pm, 7 days
435-772-0472 ⑦

ZION TOUR EXPERIENCES STARTING AT \$65 PER PERSON
ZionHelicopters.com
(435) 668-4185 | 3050 E UT-9 Virgin, Utah 84779

P Paid parking lots can be found on Lion Blvd, behind Whiptail Grill Restaurant at 445 Zion Park Blvd, and a number of other locations throughout Springdale.

Other spots of note in Springdale include the library (located on Lion Boulevard, next to Town Hall), tennis/pickleball courts (also on Lion Blvd), and the Virgin River, which has numerous locations of access, but Riverside Park is one of the best.



WELCOME TO YOUR ONE STOP SHOP
Zion T-Shirts, Hats, & Souvenirs • Unique Gifts • Hiking Gear • Ornaments • Jewelry • Stickers • Games • Toys • Rocks • Teva • Kavu • Hydro Flask • CamelBak
TRAILHEAD GIFTS & GEAR
145 Zion Park Blvd. Springdale, UT (435)-772-2420
TrailheadGiftsAndGear.com
Customer parking available in the Zion Canyon Village at the South entrance to Zion National Park

ZION OUTFITTER
Located next to ZNP South Entrance
• Narrows Outfitting
• Clothing
• Gear • Bikes
• Showers
• Laundry ①
ZionOutfitter.com

DeZion Gallery ⑩ Local Art
Photography Jewelry
435-772-6888
1051 Zion Park Blvd.

BAMBOO CHINESE RESTAURANT
828 Zion Park Blvd • Springdale, UT
Next to Pioneer Lodge
435-703-2882
Open 7 days - 11:30am to 10pm
Come enjoy some delicious Chinese food while in Zion! ⑨



perks! espresso & smoothies

Visit us at one of our 6 locations!

ST. GEORGE 1515 Sunset Blvd. 615 E. St. George Blvd	WASHINGTON 740 W. Telegraph #3 HURRICANE 1065 State St.	SPRINGDALE 147 Zion Park Blvd. CEDAR CITY 750 S. Main St.
--	--	--

West GALLERY
DAVID J. FINE ART PHOTOGRAPHY

PHOTOGRAPHY POTTERY PAINTINGS

801 Zion Park Blvd ~ Springdale, UT
Across from La Quinta
www.davidjwest.com
435.772.3510

Amidst the grandeur of Zion National Park

Zion National Park Shuttle Info

ZION 2024 FALL/WINTER SHUTTLE SCHEDULE INFO

The seasons are changing in Zion National Park! Every year, the National Park Service (NPS) adjusts shuttle schedules and campground availability throughout the year.

Here's What You Need To Know To Plan Your Visit

- You do not need a ticket or reservation to ride the park shuttle or enter the park.
- During the shuttle season, visitors cannot drive personal vehicles on Zion Canyon Scenic Drive.
- Shuttles arrive about every 15 minutes on the Springdale Line (outside the park) and about every 5-10 minutes on the Zion Canyon Line (inside the park).
- Shuttles will not run December 2-20.

Shuttles take about 45 minutes to drive between the Zion Canyon Visitor Center and the Temple of Sinawava. This means a round trip takes about an hour and a half.

Be mindful of the time you board the shuttle back to the Zion Canyon Visitor Center at the end of the day. You should not wait for the last shuttle of the day. If the last shuttle is full, or if you miss the last shuttle, you may have to walk nine miles back to the Zion Canyon Visitor Center.

Zion Canyon Line

- First bus departs Zion Canyon Visitor Center to Temple of Sinawava at 7 AM through December 1st, then at 8 AM from December 1st to Dec. 30th.
- Last bus departs Zion Canyon Visitor Center to Temple of Sinawava at 4 PM through December 1st, then at 3 PM from December 1st to Dec. 30th.
- Last bus departs the Temple of Sinawava to Zion Canyon Visitor Center at 6:15 PM through December 1st, then at 5:45 PM from December 1st to Dec. 30th.
- Shuttles will not run December 2-20.

Springdale Line

- First bus leaves the Hotel De Novo (Stop #9) at 8 AM through December 30th.



- Last bus leaves Zopm Canyon Village (Stop #1) at 6 PM through December 1st, then at 5:30 PM from December 21st to Dec. 30th.
- Shuttles will not run December 2-20.

Fall/Winter Camping

Watchman Campground is open year-round, and you can make a reservation up to six months before your visit at www.recreation.gov or by calling 1-877-444-6777. Plan ahead and make arrangements for where you will stay before you get to the park.

South Campground is closed for a long-term rehabilitation project.

Lava Point Campground is a 1-hour drive from Zion Canyon. Reservation only.

Visitor Center and Wilderness Permit Desk hours

- Zion Canyon & Kolob Canyons Visitor Centers
- The Information Desk opens at 8 AM and closes at 5 PM every day.

Wilderness Permit Desks

- Zion Canyon Wilderness Desk: Open daily from 8 AM to 5 PM.

• Kolob Canyons Wilderness Desk: Closed until late 2024

We post updates on the park's operating hours and seasons webpage when hours change.

Attend a Zion Canyon Ranger Led Patio Talk

- Free ranger talks happen outside of the Zion Canyon Visitor Center every day at:
 - 11 AM
 - 1:30 PM
 - 3 PM

No matter when you visit, be prepared for crowds and remember:

- Parking fills early year-round. You may have to wait to enter Zion Canyon Scenic Drive if parking is full there.
- Watch out for pedestrians and bicyclists if you are driving.
- Stay on trails and avoid walking in the road.
- Put your pass in your pocket. Don't forget your park pass or receipt in a hotel room or at home.
- Ride your bike on the road or the Pa'Rus Trail. Bicycling is not allowed on any other trails in the park. If you are riding in the road, you must stop to let buses pass you.
- The NPS may temporarily close roads if traffic is congested or there is nowhere for drivers to park.
- In general, fewer people visit Zion on weekdays than weekends. Consider arriving early or after 3 PM to avoid the busiest times of day.

Plan ahead and prepare

If you cannot park in Zion or if all of our campsites are full, research nearby communities and public lands to learn about other recreational activities and lodging. Always recreate responsibly and respect private owners' property and facilities.

Follow Leave No Trace practices everywhere in the park and beyond; be sure to pack out all your trash.

ZION NATIONAL PARK

Plain Air Art

INVITATIONAL

20
24 **NOVEMBER 4TH - 9TH**

- 15 ACCLAIMED LANDSCAPE ARTISTS
- ARTISTS DEMONSTRATIONS
- INTERACTIVE ART OPPORTUNITIES
- PAINT OUT & SILENT AUCTION

20 24 PUBLIC EVENT SCHEDULE NOVEMBER 4TH - 9TH, 2024

NOV. 4TH - 8TH (M-F)
ARTISTS PAINT THE PARK (ALL DAY)

NOV. 5TH, TUES.
ART DEMOS 10:30AM-3:30PM
WORTHINGTON GALLERY
SPRINGDALE, UTAH

- Krystal Brown
- Kimball Geisler
- Jim Wodark & Susiehyer
- Margaret Larlham

NOV. 6TH, WED.
ART DEMOS 10:30AM-3:30PM
WORTHINGTON GALLERY
SPRINGDALE, UTAH

- Gregory Stocks
- John Lintott
- Arlene Braithwaite & Mary Jabens
- Bruce A. Gomez

NOV. 7TH, THURS.
ART DEMOS 10:30AM-3:30PM
WORTHINGTON GALLERY
SPRINGDALE, UTAH

- Paula Swain
- Roland Lee
- Michelle Condrat & Bill Cramer
- James McGrew

NOV. 9TH, SAT.
ART IN THE PARK EVENT
ZION NATIONAL PARK
LODGE LAWN
12:30PM - 3:30PM

- Meet the Artists
- Timed Paint Event
- Silent Auction
- Community Mural Creation and More!

Oct. 1ST - Nov. 10TH
STUDIO PAINTING
EXHIBIT & SALE
WORTHINGTON
GALLERY, SPRINGDALE

Invitational Artists Studio Paintings Exhibit. All artwork for sale. Event proceeds benefit Zion National Park.

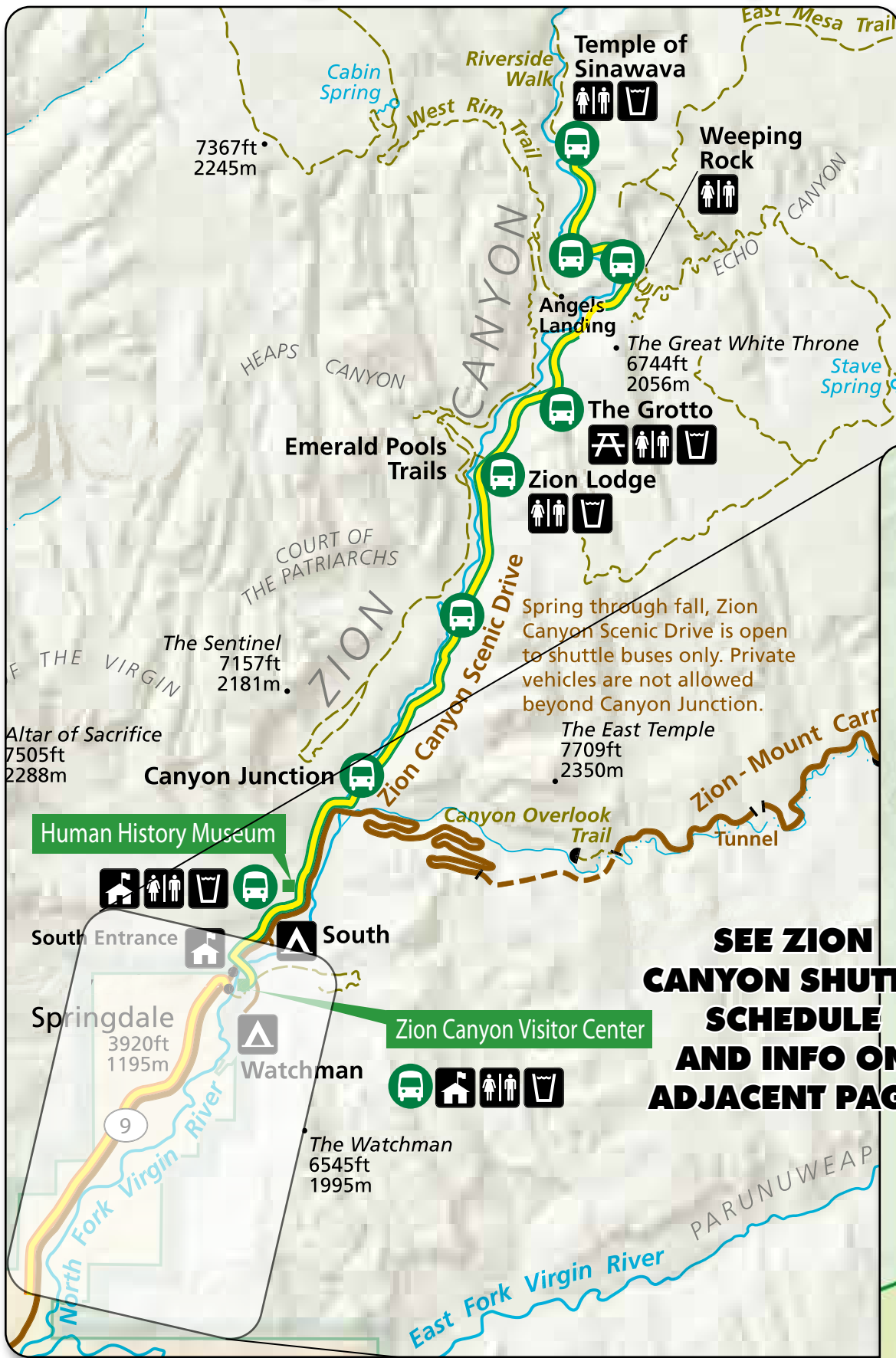
*Demonstrations and lectures are free.

*Park entrance fee applies.

FOLLOW US

MORE INFO AT ZIONPARK.ORG/ART2024

Zion Canyon Shuttle Map



Springdale Shuttle Map



WHITE MOUNTAIN TRADING POST

Quality Native American Rugs • Pottery • Jewelry

BIG GIFT SHOP WITH OVER 100,000 ITEMS!

SUBWAY Clean Restrooms • Open 7 days
Beer • Ice • Espresso • Propane

Show this ad for
20% OFF
at the Trading Post

Show this ad for
DISCOUNT GAS PRICE!

Junction of US 89 & HWY 9 • Tourist info: (435) 648-2030

Southern Utah's Coffee Roaster

...and So Much More!

Pizza, Burgers, Salads, Sandwiches, Beer, & Wine!

Mon-Sat: 6:30a - 9:30p ~ Sun 7a - 9:30p ~ 435-635-7625

394 S. State St. ~ La Verkin, UT
Halfway between St. George and Zion

Now serving hand crafted pizza

- Sustainably grown, artisan-roasted coffees • Wholesome baked goods • Sandwiches
- Utah microbrews • Whole fruit smoothies

Drive-thru: Open 7 Days ~ 6a - 6p

510 N. Main ~ La Verkin, UT
Located at SR-9 & Main ~ Across from Best Western

- Sustainably grown, artisan-roasted coffees • Wholesome baked goods
- Whole fruit smoothies • Italian Sodas

RIVER ROCK
ROASTING COMPANY
SUSTAINABLY GROWN ARTISAN ROASTED

Current Trail Closures

Closed trail bridge at Zion Lodge (Shuttle Stop #5) - To access Emerald Pools, start your hike at the Court of the Patriarchs (Shuttle Stop #4) or the Grotto (Shuttle Stop #6). Weeping Rock Shuttle Bus Stop, Due to rockfall, the area near Weeping Rock is temporarily closed. Park scientists and maintenance staff are monitoring the area. Toxic Cyanobacteria in the Virgin River and the streams of Zion National Park - Do not submerge your head in or filter drinking water from still or moving water. Visit nps.gov/zion/planyourvisit/conditions.htm for current condition updates.

Northgate Peaks

By Don Gilman

The Northgate Peaks trail in the Kolob Terrace section of Zion National Park is an amazing trail with spectacular views. The trail itself is nearly flat, making it a perfect hike for families.

To reach the Northgate Peaks trailhead, take State Route 9 to the town of Virgin. Turn left onto Kolob Terrace Road. Drive for 15.7 miles through increasingly spectacular country until the short spur road (on the right) for the Wildcat Trailhead is reached. Drive a few hundred feet to the large parking area.

The trail heads east across grassy plains and stands of Ponderosa Pine with dynamite views of the towering Pine Valley Peak to the west. Soon the trail will be fully in the forest with limited views. After 0.9 miles, the junction with the Hop Valley trail is reached. Continue east, and 0.1 miles further, the junction with the Northgate Peaks Trail is reached. Head south on this trail for another 1.1 miles until the end of the official trail is reached at a rocky basalt bluff with epic views of the Northgate Peaks to the east and west and of North Guardian Angel to the south.

For families with young children, this makes an excellent turnaround spot.

Gifford Canyon

By Bo Beck

Gifford Canyon offers a nice stroll through a sandy wash and is very charming when water is running. This hike is nearly 3 miles long and will take about 2 hours to finish.



To start this hike, park in the lot located immediately east of the Zion/Mt. Carmel Tunnel. The trail begins at the backside of the restrooms at the back of the parking lot. There will be a steep, sandy path to climb down before you enter Pine Creek slot. Follow the path upstream for almost 75 feet, and look for a 15-foot wall of slickrock. You can scramble up the rock or look for the beaten path on the backside of the rock.

On top of this wall is a narrow dirt path that is crowded by rock and vegetation. It winds around the mountain to a dead end with a beautiful view of the mountain where the Canyon Overlook Trail is located, opposite is Gifford Canyon.

The path will lead past stone bridge and to another minor slickrock climb. At the end of the canyon, there is a circle of cliffs preventing further exploration without climbing up the sandstone.

Chinle Trail

By Greta Hyland

Chinle Trail is an off-the-beaten-path trail located in the lower elevation west desert wilderness area, offering wide vistas, desert landscapes, and a reprieve from the more touristy trails in the park. Though it's a long trail, it's a mellow hike that can be cut off whenever you feel like turning around. It's a great hike with kids because it's not treacherous, slippery, or steep. Avoid it after snow or rain as it will be muddy.

The Chinle Trailhead starts outside of Zion, south of Springdale. If you are coming from St. George, the turn is about a block before you hit the apple orchard and stand as you leave Rockville off of State Route 9. There is a parking area off the right of Anasazi Way near the Anasazi Plateau housing development. If you hit houses, you missed it. And yes, the trail starts below the housing development and takes you right through it. Don't worry though, it doesn't last long.

Shortly after you get through the housing development, you will hit a sign letting you know you are entering the Zion Wilderness. At this point, you can breathe a sigh of relief, because you have gotten away from civilization to enjoy nature, and chances are that you won't see another soul until you return to your car.

Many Pools

By Candice Reed

The route is moderate with a gentle uphill climb to an alcove, but plan for a strenuous hike if you continue to the East Rim.

The route begins right off the highway. Drive to the pullout near the second drainage on the north side of the State Route 9, about 0.8 miles after the smaller tunnel. Walk carefully along the road about 150 yards and drop down into a sandy bowl on the north side of SR-9. There is a trail for a short distance, and then the sand turns into large flat stones that you can pick and

choose to walk on, depending on your sense of balance. A short distance off the road, filled pools carved into the rocks appear. Ponderosa Pines and Juniper trees twisted by the wind are a good backdrop to the reds and whites ribboned through the rocks.

Overlook Trail

By Charlotte Ematt

The Overlook Trail is a short, beautiful hike located on the east side of Zion National Park, just outside the Mt. Carmel tunnel. The hike is about one mile roundtrip, and it usually takes people about an hour. It is definitely one of the easier hikes in Zion, but it's still considered a moderate-level hike due to a few exposed areas and sandstone pathways, which can be slippery.

The Overlook trailhead lies right outside of the Mt. Carmel tunnel by the ranger booth. Exit the tunnel too quickly and you'll miss it.

It begins with a staircase carved out of the sandstone leading up and away from the road. Soon, you'll be walking along the side of the mountain and looking down into a thin crevice known as Pine Creek Canyon. At about halfway, you'll walk across a bridge that wraps around a corner and leads to an area of recessed rock wet with the moisture that caused it to erode and be filled with ferns growing out of the sandstone.

The East Rim Trail

By Bo Beck and Tanya Milligan

After positioning a vehicle or making shuttle arrangements at the Weeping Rock parking lot, watch for the small "trailhead" sign along the Zion-Mt. Carmel Highway, immediately west of the east entrance booth.

This trail is said to be one of the most scenic in all of Zion National Park and is on many lists as one of the best hikes in Utah. This trek begins on the east side of the park and climbs over 1,400 feet to the rim. This hike begins with a backdoor view of Checkerboard Mesa as it skirts Clear Creek for a short time and steadily and gently climbs through a juniper and pine forest. On top of the mesa, scenery gets interesting as a spectacular view of Echo Canyon takes center stage.



Popular Zion Hikes

Current Trail Closures

Closed trail bridge at Zion Lodge (Shuttle Stop #5) - To access Emerald Pools, start your hike at the Court of the Patriarchs (Shuttle Stop #4) or the Grotto (Shuttle Stop #6). Weeping Rock Shuttle Bus Stop, Due to rockfall, the area near Weeping Rock is temporarily closed. Park scientists and maintenance staff are monitoring the area. Toxic Cyanobacteria in the Virgin River and the streams of Zion National Park - Do not submerge your head in or filter drinking water from still or moving water. Visit [nps.gov/zion/planyourvisit/conditions.htm](https://www.nps.gov/zion/planyourvisit/conditions.htm) for current condition updates.

Warning: These hikes are very popular and often overcrowded. If you are feeling up to some of the more difficult hikes, try some of these popular hikes.

Angels Landing via West Rim Trail

Possibly the most popular hike in Zion, Angels Landing takes around four hours to complete, covers just under 5 1/2 miles, and requires a permit to hike. As you work your way up the 1,488-foot change in elevation, you'll want to look out for long drop-offs. This hike is not for young children or people with a fear of heights. Be sure to enjoy, but be careful along the last section of the hike, which is a steep, narrow ridge to the summit. The hike starts at The Grotto.

The Narrows via Riverside Walk

A full-day hike at 8 hours, the Narrows can pose extra dangers depending on the weather. High water levels can prevent access to the Narrows, so be sure to check with the visitor center before beginning this 9 1/2-mile hike. You'll start this hike at Temple of Sinawava.

Kolob Arch via La Verkin Creek Trail

Getting to Kolob Arch via the La Verkin Creek Trail follows Timber and La Verkin creeks and connects to the trail to Kolob Arch, one of the world's largest freestanding arches. A full-day hike, it will take around 8 hours to finish the 14-fourteen mile trip. This hike starts at Kolob Canyons Road.

If you are looking for something more moderate, try some of these mid-range hikes.

Kayenta Trail

This two-hour hike starts at the Grotto and goes for two miles. You'll gain 150 feet in elevation, and the trail does have long drop-offs. This unpaved climb connects the Grotto to the Emerald Pools trails.

Canyon Overlook Trail

Starting at Zion-Mt. Carmel Highway, this one-hour hike provides a 163-foot gain in elevation over the course of a mile. This rocky and uneven trail ends at a viewpoint for Pine Creek Canyon and lower Zion Canyon. While this trail is mostly fenced, there are long drop-offs.

Taylor Creek Trail

You'll begin this five-mile hike at Kolob Canyons Road. It should take around 4 hours to complete and provides a 450-foot gain in elevation. Larger groups may need to split up, as this hike limits 12 people to a group. It follows the Middle Fork of Taylor Creek past two homestead cabins to Double Arch Alcove.

Timber Creek Overlook Trail

A quick hike, the Timber Creek Overlook Trail covers just one mile and 100



"Autumn Breeze" - photo by David J West.

feet in elevation gain. It can be done in about 30 minutes. The trail follows a ridge to a small peak with views of Timber Creek, Kolob Terrace, and Pine Valley Mountains.

Those looking for something less strenuous should check out these easy hikes.

Pa'rus Trail

Starting at the Zion Canyon Visitor Center, this two-hour hike covers 3 1/2 miles and rises 50 feet in elevation. A paved trail that follows the Virgin River from the South Campground to Canyon Junction, Pa'rus Trail is wheelchair accessible and is open to both bicycles and dogs.

Archeology Trail

Also starting at the Zion Canyon Visitor Center, this short half-hour hike covers just under half a mile and rises 80 feet in elevation, making it a short but steep trail. This trail offers trailside exhibits and views of several prehistoric buildings.

Grotto Trail

Starting at Zion Lodge or the Grotto, this trail connects the two locations and can be combined with the Middle Emerald Pools and Kayenta trails to create a 2 1/2-mile loop. The non-loop version should take about 30 minutes and rises 35 feet over one mile.

Riverside Walk

Starting at Temple of Sinawava, this 1 1/2-hour hike cover just over two miles and rises 57 feet in elevation. While it is wheelchair accessible, there are minor drop-offs. The trail, which is paved, offers trailside exhibits as it follows the Virgin Rivet along the bottom of a narrow canyon.



Soup • Salads
Sandwiches • Wraps
Ice Cream • Pie



Open Tues - Fri, 11-5
30 East State Street
Orderville, Utah
435-648-2370



828 Zion Park Blvd • Springdale, UT
Next to Pioneer Lodge
435-703-2882





Open 7 days - 11:30am to 10pm
Come enjoy some delicious Chinese food in Zion!

ZionOutfitter.com



Located next to ZNP South Entrance

- Narrows Outfitting
- Clothing
- Gear
- Bikes
- eBikes
- Showers







Explore all day. Snuggle all night.

A one-of-a-kind **pet-centric hotel** located in the heart of Utah's national parks and just 5 miles from Best Friends Animal Sanctuary



bestfriendsroadhouse.org
30 N. 300 W. Kanab, UT 84741
435-644-3400

Southern Utah State & National Parks

ANASAZI STATE PARK MUSEUM - This ancient Indian village in the heart of Utah's canyon country was one of the largest Anasazi communities west of the Colorado River. The site is believed to have been occupied from A.D. 1050 to 1200. The village remains largely unexcavated, but many artifacts have been uncovered and are on display in the newly remodeled museum. Anasazi State Park is in the picturesque town of Boulder on State Route 12. Group and individual picnic areas are available. There is no camping. (435) 335-7308.

BAKER - Baker Reservoir is a small lake on the Santa Clara River four miles north of Veyo on Utah State Route 18. It is a 63-acre lake with an average depth of about 20 feet. Many people come to the reservoir to camp at one of its 10 campsites and to fish. The reservoir is stocked with rainbow trout and contains brown trout, green sunfish, crayfish, redbreast shiner, and mountain sucker. It has picnic areas and vault toilets. There is a fee for visiting the reservoir and no boat ramp.

BRYCE CANYON - Bryce Canyon National Park is a scientist's laboratory and a child's playground. Because Bryce transcends 2,000 feet of elevation, the park exists in three distinct climatic zones: spruce/fir forest, ponderosa pine forest and pinon pine/juniper forest. This diversity of habitat provides for high biodiversity. Here at Bryce, you can enjoy over 100 species of birds, dozens of mammals, and more than a thousand plant species. (435) 834-5322.

CEDAR BREAKS - Sitting at over 10,000 feet and looking down into a half-mile deep geologic amphitheater. Come wander among timeless bristlecone pines, stand in lush meadows of wildflowers, ponder crystal-clear night skies and experience the richness of our subalpine forest. Just four miles off Utah Highway 148, you'll find the Cedar Breaks National Monument parking lot.



CORAL PINK SAND DUNES - At an elevation of 6,000 feet and 12 paved miles off U.S. Highway 89 near Kanab, this park provides a fantastic setting for camping, hiking, OHV riding or just playing in the sand. A 265-acre conservation area prohibits motorized vehicles in order to protect the Coral Pink beetle (found nowhere else in the world) and its habitat. The mule deer, jackrabbit, kit fox, coyote, and many small rodents also make the park their home. (435) 648-2800.

DEAD HORSE POINT - Dead Horse Point State Park is perhaps Utah's most spectacular state park. Dead Horse Point is a promontory of stone surrounded by steep cliffs near Moab. The overlook at Dead Horse Point is 6,000 feet above sea level. Two-thousand feet below, the Colorado River winds its way from the continental divide in Colorado

to the Gulf of California, a distance of 1,400 miles. (435) 259-2614.

DINOSAUR TRACKS - The St. George Dinosaur Discovery Site at Johnson Farm is home to exceptionally well-preserved dinosaur tracks, some displaying skin impressions. These tracks, along with hundreds of fossil fish, plants, rare dinosaur remains, invertebrates' traces, and important sedimentary structures, show evidence that this site was produced along the western edge of a large, Early Jurassic (age between 195-198 million years ago) freshwater lake. (435) 574-3466.

ENTERPRISE - There are two reservoirs in the Bull Valley Mountains 10 miles southwest of the town of Enterprise. The main one is Upper Enterprise Reservoir, about 250 acres with an average depth of about 50 feet, while Lower Enterprise Reservoir is 79 acres. Many come to the reservoir to camp, fish hike, and boat. The Honeycomb Campground



is situated between both lakes and has 21 campsites and flush toilets. There is a boat ramp on Upper Enterprise Reservoir and several fishing areas around both reservoirs. Fishermen will find rainbow trout and smallmouth bass here. Fees are charged.

FOUR CORNERS - The Four Corners is the only place in the U.S. where four states come together at one place: Arizona, New Mexico, Utah and Colorado. Here, a person can put each of their hands and feet in four states at the same time. The unique landmark is on Navajo Nation land and is open for visits from the public. West of U.S. Highway 160, 40 miles southwest of Cortez, Colo. (928) 871-6436.

GRAND CANYON - A World Heritage Site encompassing 1,218,375 acres on the Colorado Plateau in northwestern Arizona. The land is semi-arid and consists of raised plateaus and structural basins typical of the southwestern United States. (928) 638-7888.

GRAND STAIRCASE-ESCALANTE NATIONAL MONUMENT - Nearly 1.9 million acres of America's public lands and located between Bryce Canyon and Glen Canyon Recreational Areas. From its namesake Grand Staircase of cliffs and terraces across the rugged Kaiparowits Plateau to the beauty of the Escalante River Canyons, the Monument's size, resources, and isolated location provide amazing opportunities.

GUNLOCK - In scenic red rock country, 15 miles northwest of St. George, lies the 240-acre Gunlock State Park and Reservoir where year-round boating, water sports, and quality fishing for bass and catfish attract visitors. Facilities include boat launching ramp and pit privies. (435) 628-2255.

LAKE MEAD - Lake Mead National Recreation Area offers a wealth of things to do and places to go year-round. Its huge lakes cater to boaters, swimmers, sunbathers and fishermen, while its desert rewards hikers, wildlife photographers, and roadside sightseers. It is also home to thousands of desert plants and animals adapted to survive in an extreme place where rain is scarce and temperatures soar. (702) 293-8990.

LAKE POWELL - In Glen Canyon National Recreation Area is one of the world's great places for houseboating! The 186-mile-long lake offers sandy beaches, cool blue water, and exceptional red-rock scenery. It is excellent for boating, skiing, kayaking, and fishing. Boat or hike to Rainbow Bridge, or explore any of its many canyons or sand dunes. (928) 608-6200.

PINE VALLEY - Pine Valley Reservoir is a beautiful place for fishermen to fish brook trout and rainbow trout. The reservoir is near the Pine Valley Recreation Complex, which has over 150 campsites with picnic and restroom facilities. This area is greener than most other parts of southwestern Utah with pine and pinon trees, and many come to enjoy camping and hiking. It is west of the town of Central. (435) 652-3100.

QUAIL LAKE - Quail Creek State Park provides excellent year-round camping, picnicking, boating, and trout and bass fishing in sunny southwest Utah. The park is three miles east of the Interstate 15 Hurricane exit on Utah State Route 9. Facilities include 23 campsites, modern restrooms, a fish cleaning station, and two covered group-use pavilions. (435) 879-2378.

SAND HOLLOW - Looking to fish? Swim? Ride your ATV in the sand? Do all that and more at Sand Hollow State Park, located between St. George and Hurricane. Bring your boat, a picnic, and some fishing gear for a fun day on the reservoir, or watch the kids swim while you relax on the beach. Load up your RV or tent and settle in for a nice campout, or ride your ATV in the dunes of Sand Mountain. (435) 680-0715.



SNOW CANYON - Named after early Utah leaders Lorenzo and Erastus Snow, Snow Canyon State Park begins just outside of Ivins and stretches northward. Spectacular scenery includes towering red and white sandstone cliffs, black lava formations, and even a waterfall that appears during heavy rain. Snow Canyon offers 16 miles of hiking trails, beautiful sand dunes, technical rock climbing sites, horseback riding, year-round camping, nature studies, and wildlife viewing. This park is a favorite for locals and visitors alike. (435) 628-2255.

ZION - With breathtaking views, numerous hiking attractions of all difficulty levels and some of the most spectacular scenery on earth, Zion National Park and its surrounding areas attract thousands of visitors every year. This natural wonder is not only a mecca of recreational activity, but Zion and nearby Springdale host numerous cultural activities, as well. There's something for everyone in Zion - whether you're looking for a challenging hike or a fun excursion for the family. (435) 772-3256.

**260 East
300 South
Kanab, Utah
435-644-5877**

**Enjoy Fresh Sushi and our
NEW Grab & Go Cases**



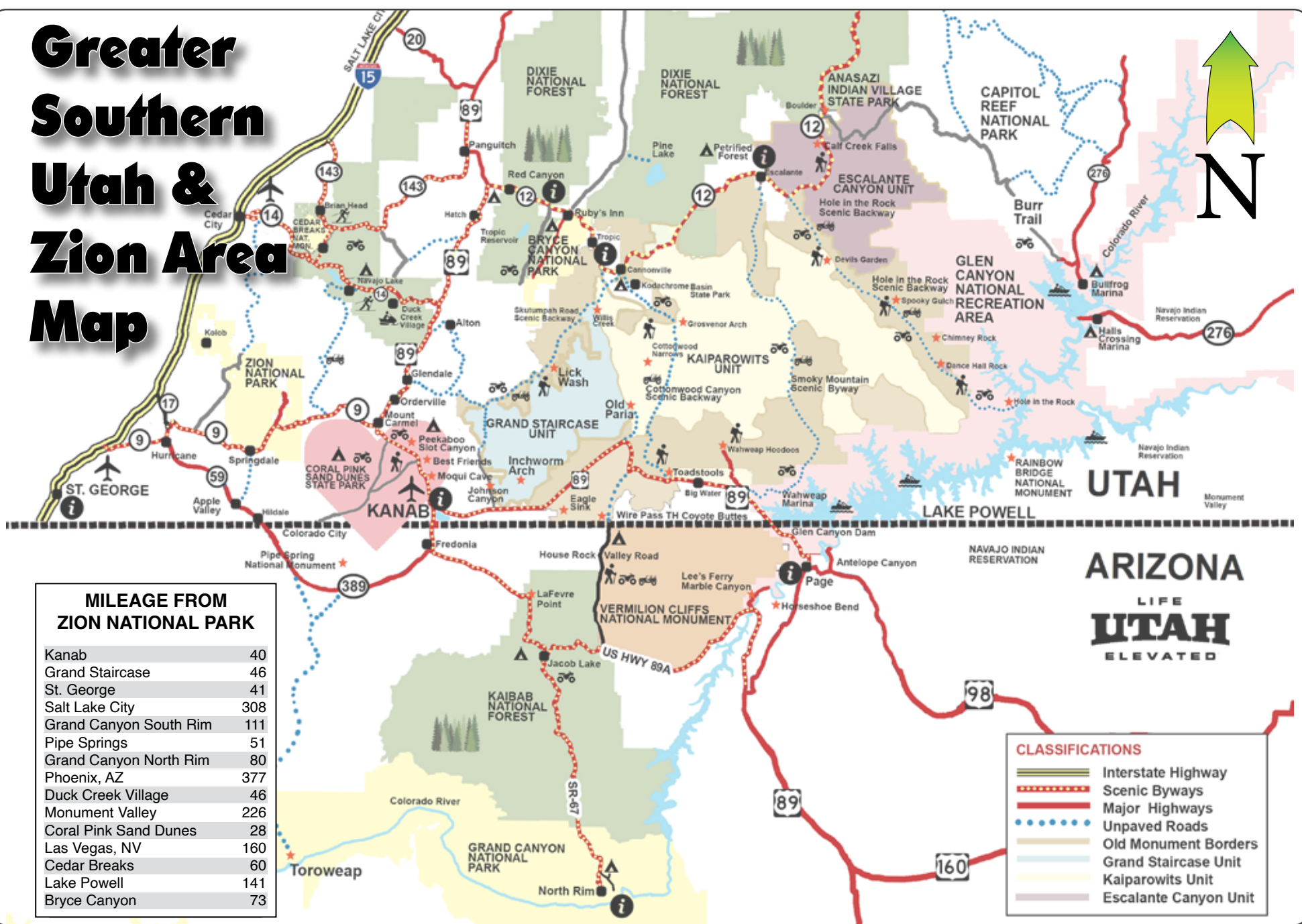




LARGEST SUPERMARKET IN THE AREA!
FRESH DELI • MEATS • PRODUCE • BAKERY • VEGETARIAN & GLUTEN FREE FOODS
CAMPING GEAR & SUPPLIES • SOUVENIRS • FLORAL • ATM • RED BOX • STAMPS
TRY OUR SMOKED RIBS!

Visit Honey's Marketplace on Facebook for the latest deals and at www.honeysmarketplace.com

Greater Southern Utah & Zion Area Map



ZION JEEP TOURS

Backcountry Without the Blisters

Private & Group Tours
Scenic and Informative

435-668-3756

GET 10% OFF ANY TOUR
USE CODE ZG2024 WHEN BOOKING ON OUR SITE

ZionJeepTours.com

Over the Edge Sports

**76 East 100 South
Hurricane, Utah**

On the trail to Gooseberry Mesa
(435) 635-5455

Open 9am to 6pm • 7 Days

Full Service Bike Shop
Sales • Rentals • Service
Mountain Bike Rentals & eBike Rentals

See us at overtheedge.bike or on

OPEN SEVEN DAYS A WEEK!

jakey leigh's
cafe and bakery

Fresh Coffee & Espresso Drinks
Baked goods made from scratch • Quality Fresh Ingredients
Breakfast and Lunch Sandwiches
Featuring New York Style Homemade Bagels

4 East Center Kanab, Utah • (435) 644-8191

Kanab Utah City Map

Honey's Marketplace
Groceries and so much more!

Enjoy Fresh Sushi and our Grab & Go Cases

260 East 300 South • Kanab, Utah • 435-644-5877

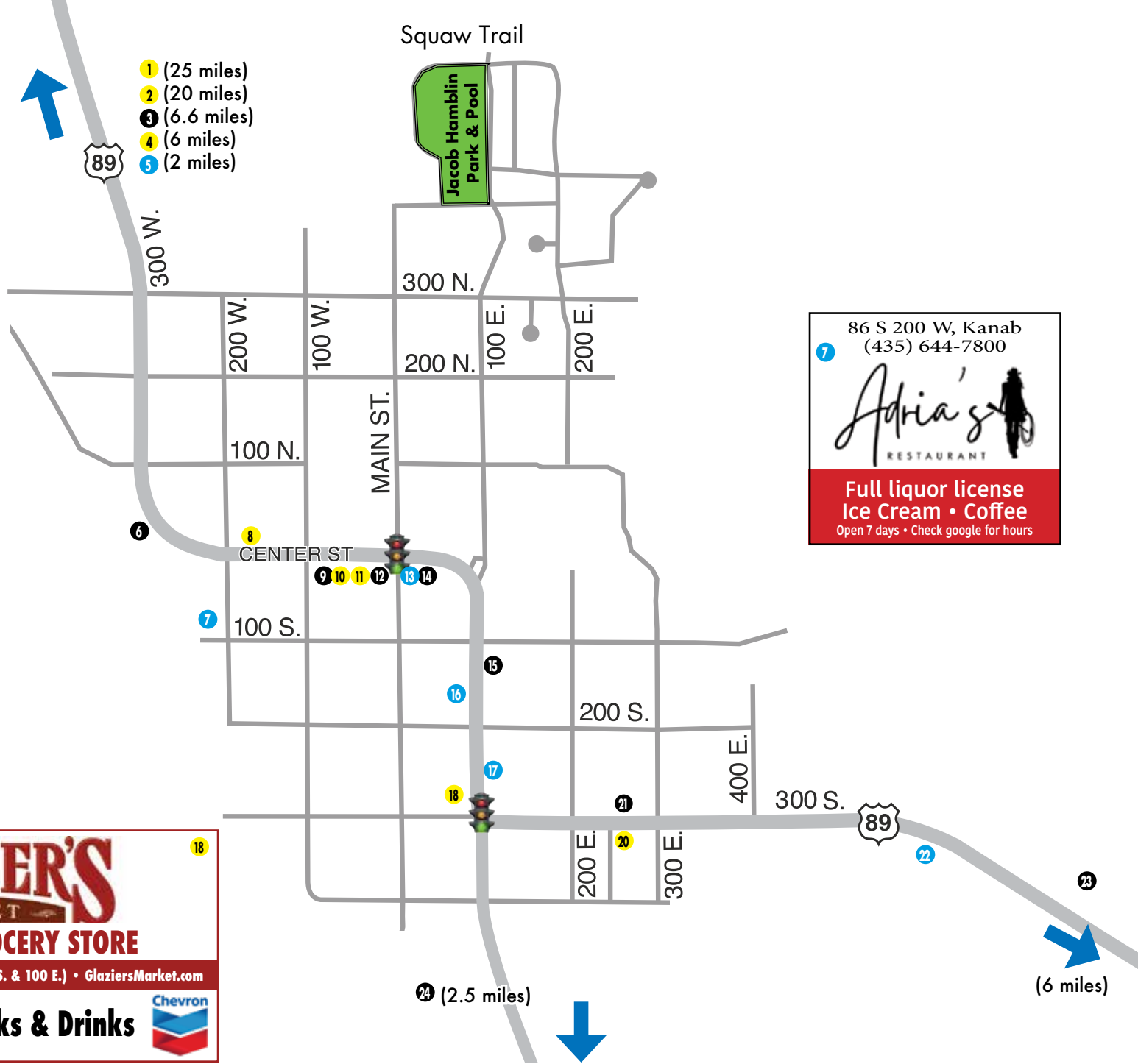
Visit Honey's Marketplace on Facebook for the latest deals and at www.honeysmarketplace.com 


jakey leigh's
cafe and bakery

M - F: 7am - 3pm • Sat & Sun: 8am - 2pm

- Baked goods made from scratch
- Quality Fresh Ingredients
- Breakfast and Lunch Sandwiches
- Dog-Friendly Outside Seating
- Featuring New York Style Homemade Bagels

4 East Center Kanab, UT 84741
(435) 644-8191 



86 S 200 W, Kanab
(435) 644-7800


Adria's
RESTAURANT

Full liquor license
Ice Cream • Coffee
Open 7 days • Check google for hours

GLAZIER'S MARKET
FULL SERVICE GROCERY STORE

264 S. 100 E., Kanab, Utah (at the light 300 S. & 100 E.) • GlaziersMarket.com

STAGE STOP Fuel, Snacks & Drinks 



Custom Full Service Meat • Ice • Dry Ice
Large Full Service Deli
Bakery • Large Fresh Produce Section



Large Coffee Selection
Large Selection of Hot & Cold Foods



264 South 100 East, Kanab, Utah (at the light at 300 S. & 100 E.) • GlaziersMarket.com

EAST ZION & KANAB'S FEATURED RESTAURANTS FROM ZION GUIDE

Restaurants <small>(Listed Alphabetically)</small>	Address	Phone	Drinks/Vegan <small>(W)ine, (B)eer, (M)ixed Drinks, (E)spresso, (V)egan items on menu</small>	Hours	WI-FI
7 Adria's Restaurant	86 S 200 W, Kanab	(435) 644-7800	W, B, M	8:30am-2pm Tues-Sun	No
16 Asava Juice & Smoothies	176 S 100 E, Kanab	(435) 644-2637	V	9am-6pm Mon-Sun	Yes
13 Jakey Leigh's	4 E Center St, Kanab	(435) 644-8191	E, V	7am-2pm Mon-Fri, Sat & Sun 8am-Noon	Yes
5 Nomad Cafe & RV Resort	2400 N Hwy 89, Kanab	(406) 594-0294	E, V	6:30am-2:30pm Thurs-Mon	Yes
22 Sunny Creek Coffee	681 E Chinle, Kanab	(435) 212-3839	E, V	7am-2:30pm Mon, Wed-Sat	Yes
17 Willow Canyon Outdoor	263 S 100 E, Kanab	(435) 644-8884	E	7:30am-7pm daily	Yes

EAST ZION & KANAB'S FEATURED SERVICES, SHOPS & GALLERIES FROM ZION GUIDE

FOR EMERGENCIES DIAL 911

Services (Listed Alphabetically)

19 Adobe Realty	323 S 100 E, Kanab	(435) 644-2232
3 Best Friends Animal Sanctuary	5001 Angel Canyon Rd, Kanab	(435) 644-2001
24 Blacksmith Adventures	2450 S Hwy 89, Kanab	(575) 313-4650
23 Dreamland Safari Tours	Serving the greater Kanab area	(435-644-5506
12 ERA Utah Properties	7 West Center, Kanab	(435-644-2606
12 Kanab eBikes	11 W Center St, Kanab	(435) 899-0489
22 Kanab Tour Company	681 Chnle Dr, Kanab	(435) 644-5525
6 Nature's Showcase	288 W Center, Kanab	(435) 644-2390
9 The Cut Scene	89 W Center, Kanab	(435) 849-8670
15 Ramsay Auto Service	115 S 100 E, Kanab	(435) 644-8070
14 Zion Pharmacy	14 E Center, Kanab	(435) 644-2693

Shops (Listed Alphabetically)

18 Glazier's Market	264 S 100 E, Kanab	(435) 644-5029
1 Glendale Country Store	10 N Main St, Glendale	(801) 918-7107
20 Honey's Marketplace	260 E 300 S, Kanab	(435) 644-5877
8 Kanab Drug	176 W Center, Kanab	(435) 644-3401
4 Moqui Cave	4581 US-89	(435) 644-8525
10 Lotus Boutique & Studio	87 W Center St, Kanab	
2 The Rock Stop	385 W State St, Orderville	(435) 648-2747

To get your business on this map and directory please call Josh at 435-632-1555 for details.

ELEVATE YOUR ZION NATIONAL PARK EXPERIENCE



ZION TOUR EXPERIENCES STARTING AT \$65 PER PERSON



ZION HELICOPTERS

INCREDIBLE VIEWS OF ZION NATIONAL PARK!



ZION JEEP TOUR ADVENTURES

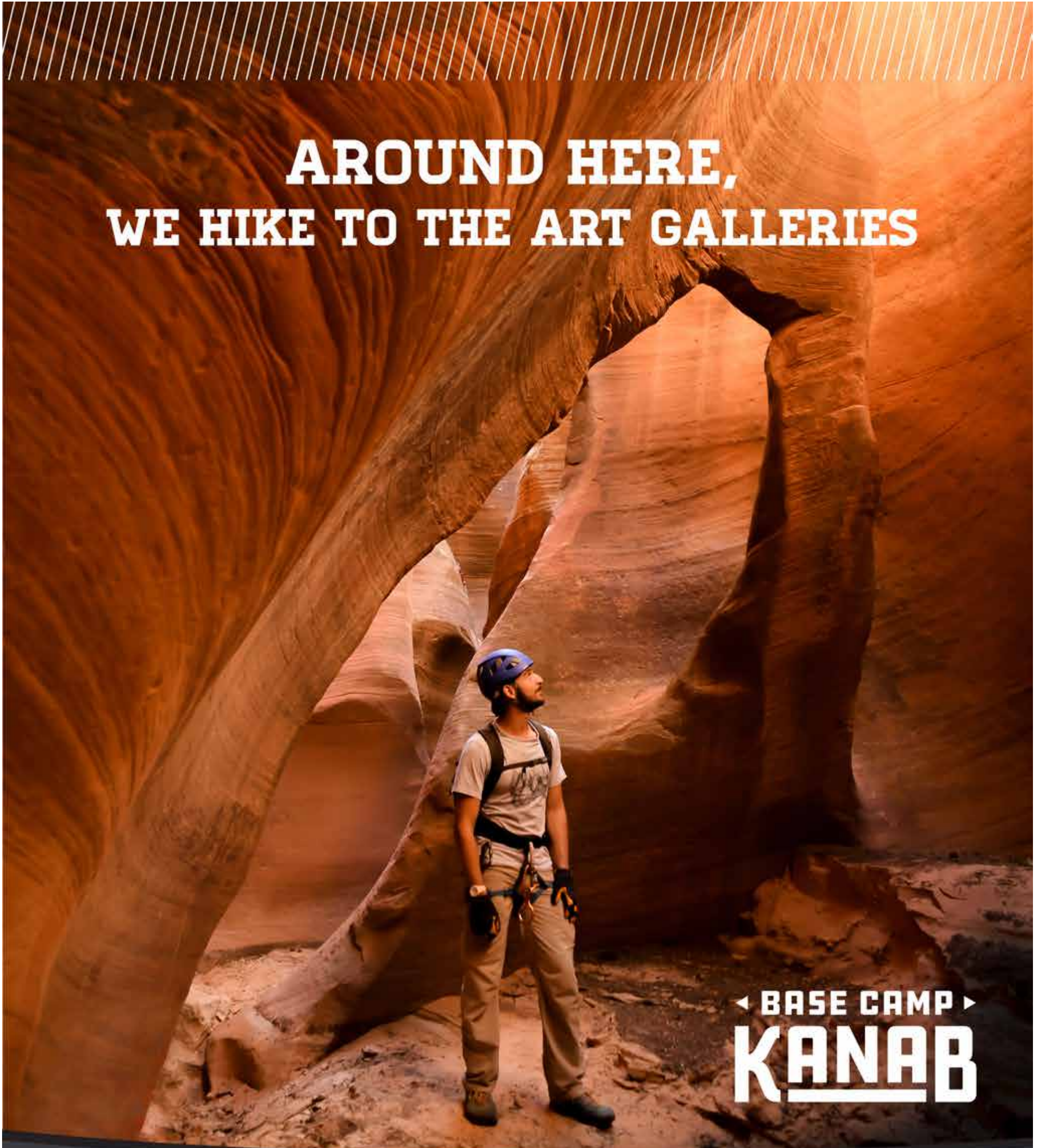
EXCLUSIVE ACCESS TO ZION WEST TEMPLE!



ZION
HELICOPTERS

(435) 668-4185 | ZionHelicopters.com
3050 E UT-9 Virgin, Utah 84779

AROUND HERE, WE HIKE TO THE ART GALLERIES



◀ BASE CAMP ▶
KANAB

visitsouthernutah.com

	DISTANCE FROM KANAB		HIKING DISTANCE
LAKE POWELL/GLEN CANYON REC AREA	73 MI (117 KM)	SAND CAVES	.5 MI (117 KM)
CORAL PINK SAND DUNES	23 MI (37KM)	DINOSAUR TRACKS	1 MI (37KM)
ZION NATIONAL PARK	40 MI (64KM)	WIRE PASS	2 MI (64KM)
BRYCE CANYON NATIONAL PARK	77 MI (124 KM)	TOADSTOOLS	2 MI (124 KM)
GRAND CANYON NORTH RIM	78 MI (126 KM)	BUNTING TRAIL	3 MI (126 KM)